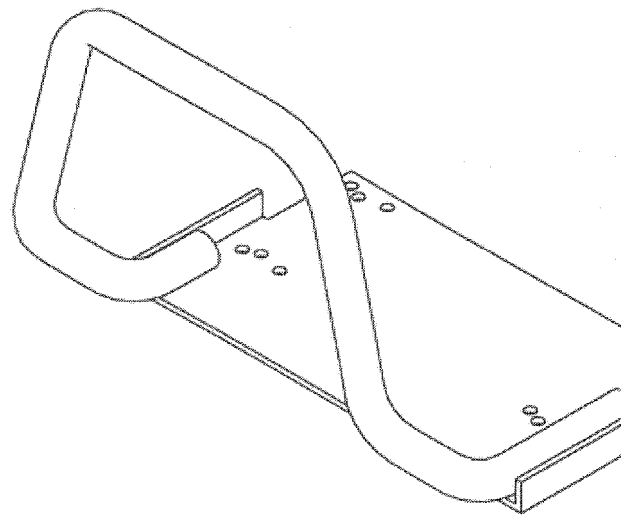
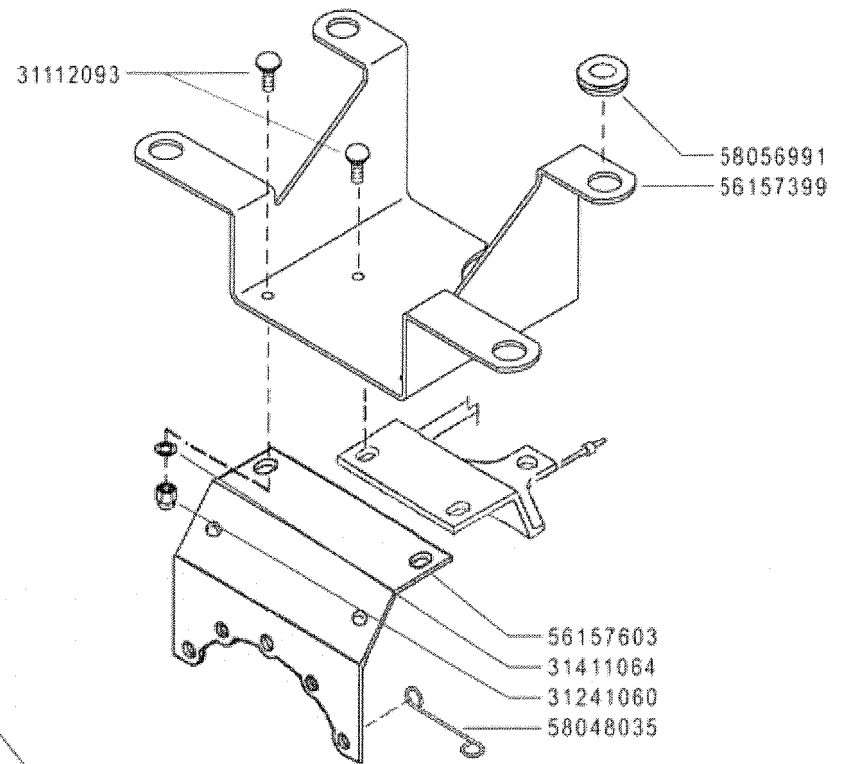


55252413
55252406



31241080
31411084
59053224
31411084
31112155 (M8x45)
31112153 (M8x35)



31112093
58056991
56157399
56157603
31411064
31241060
58048035

FERRARI

300 serie **95**

PROTEZIONI MOTORE (346)

ENGINE GUARDS
PROTECCIONES MOTOR

PROTECTIONS MOTEUR
MOTORSCHUTZ

DALLA MACCHINA
DE LA MAQUINA
DE LA MACHINE
FROM THE MACHINE
AB DER MASCHINE

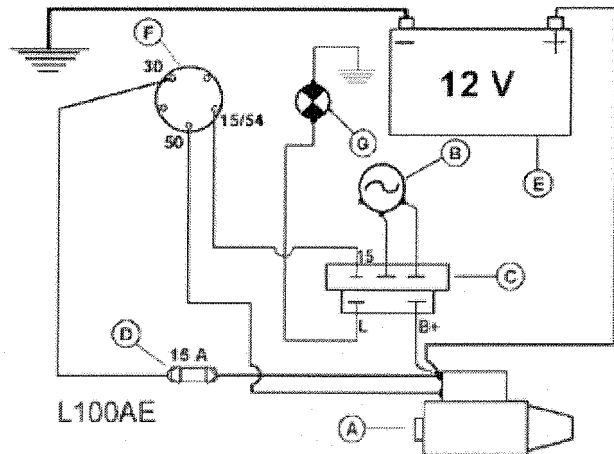
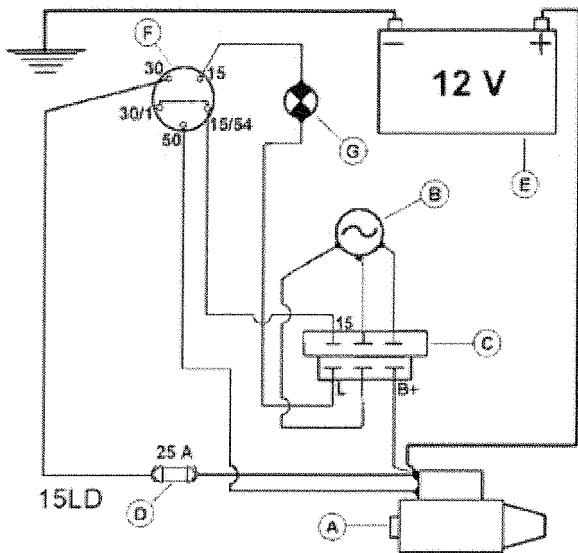
N.

752002

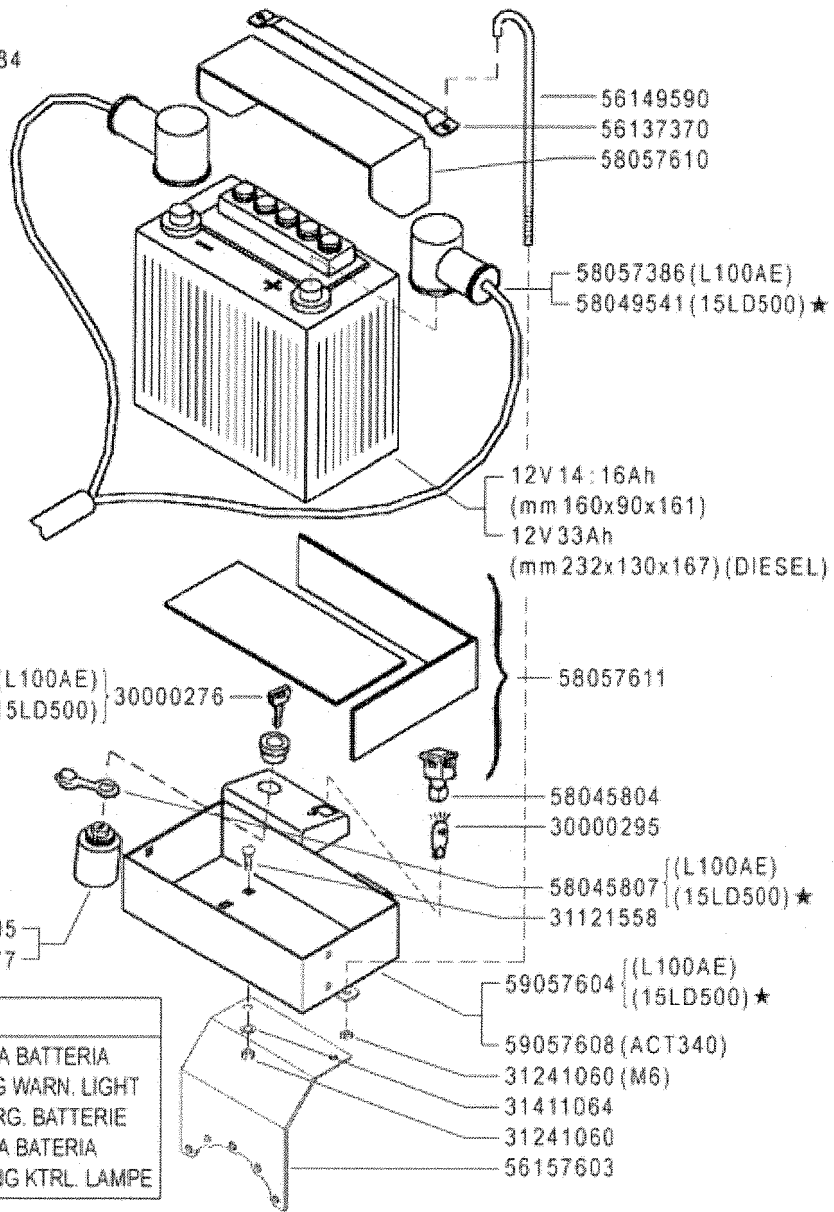
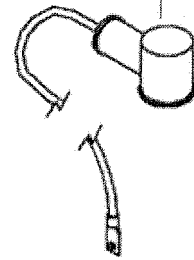
01 B 0

02/2006

Rev.



(ACT340) 58057384



★ (15LD500) 58045805
(L100AE) 30000277

A	B	C	D	E	F	G
MOTORINO D'AVVIAMENTO STARTER DÉMARREUR MOT. DE ARRANQUE ANLASSMOTOR	GENERATORE GENERATOR GÉNÉRATEUR GENERADOR GENERATOR	REGOLATORE REGULATOR RÉGULATEUR REGULADOR REGLER	FUSIBILI FUSES FUSIBLES FUSIBLES SCHMELZSICHERUNGEN	BATTERIA BATTERY BATTERIE BATERIA BATTERIE	INTERRUTTORE SWITCH INTERRUPTEUR INTERRUPTOR SCHALTER	SPIA CARICA BATTERIA BATTERY LONG WARN. LIGHT TEMOIN CHARG. BATTERIE LUZ CARGA BATERIA BATTERIELADUNG KTRRL. LAMPE

FERRARI

300 serie 95

AVVIAMENTO ELETTRICO (340-346)

ELECTRIC STARTER
ARRANQUE ELECTRICO

DÉMARRAGE ÉLECTRIQUE
ELEKTROSTART

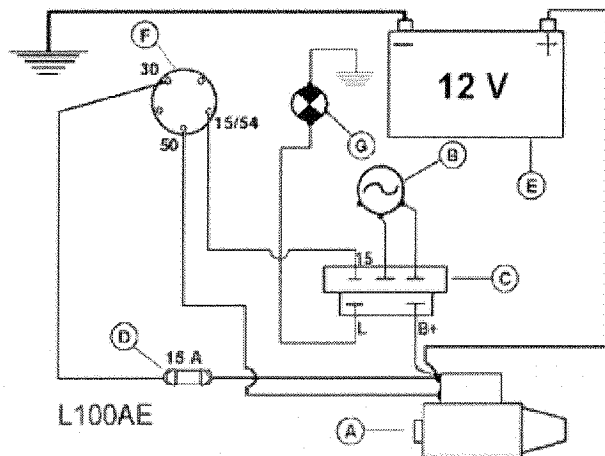
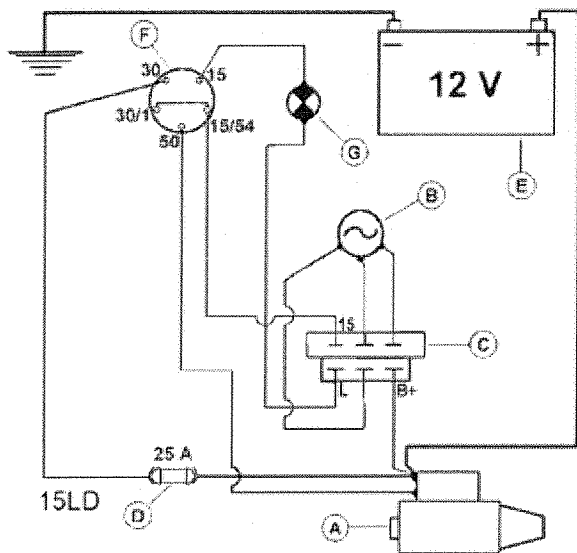
DALLA MACCHINA
DE LA MAQUINA
DE LA MACHINE
FROM THE MACHINE
AB DER MASCHINE

★ N.

752002 (346)
749391 (340)

02 5

02/2006



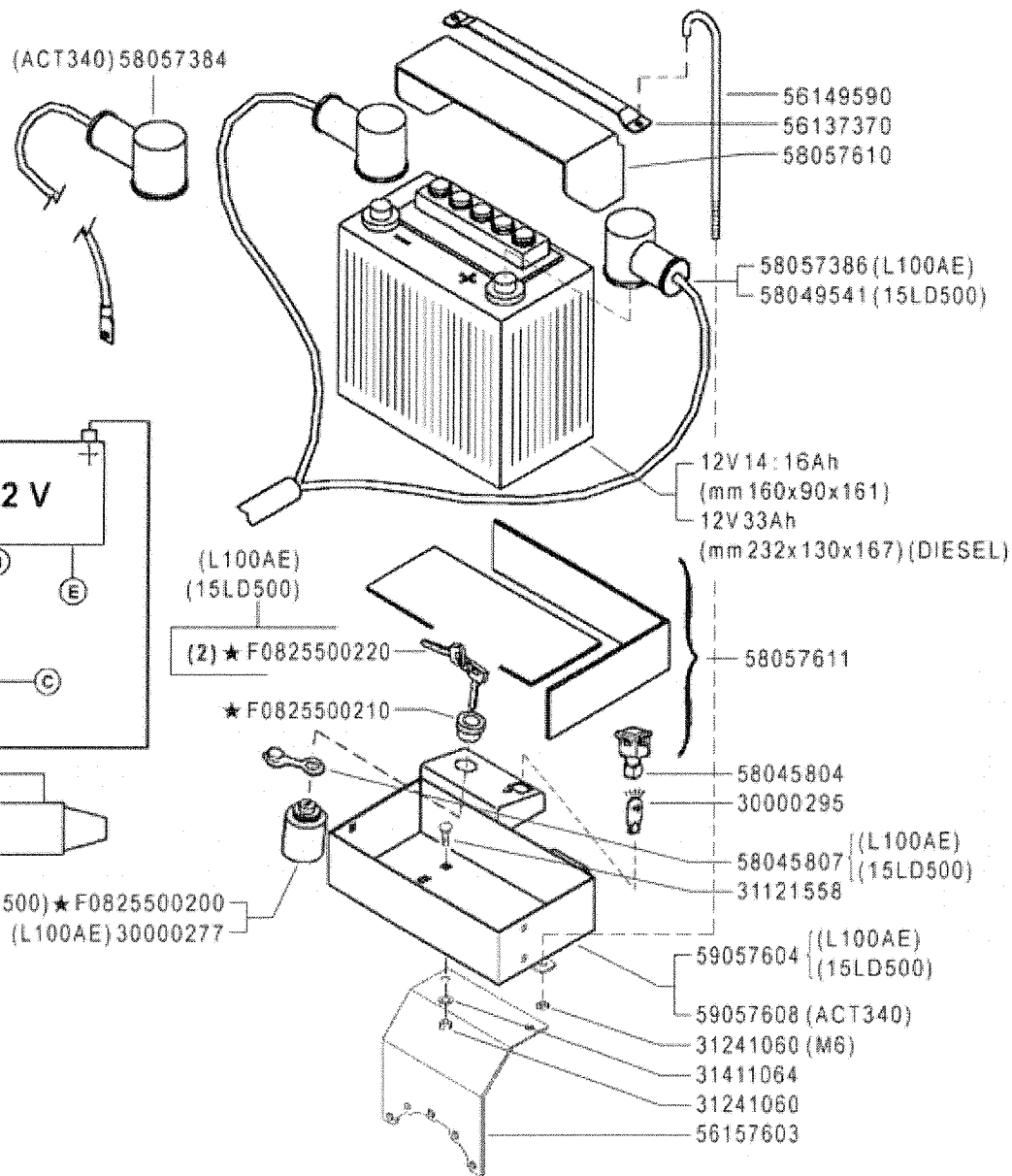
A	B	C
MOTORINO D'AVVIAMENTO	GENERATORE	REGOLATORE
STARTER	GENERATOR	REGULATOR
DÉMARREUR	GÉNÉRATEUR	RÉGULATEUR
MOT. DE ARRANQUE	GENERADOR	REGULADOR
ANLASSMOTOR	GENERATOR	REGLER

D	E	F	G
FUSIBILI	BATTERIA	INTERRUTTORE	SPIA CARICA BATTERIA
FUSES	BATTERY	SWITCH	BATTERY LONG WARN. LIGHT
FUSIBLES	BATTERIE	INTERRUPTEUR	TEMOIN CHARG. BATTERIE
FUSIBLES	BATERIA	INTERRUPTOR	LUZ CARGA BATERIA
SCHMELZSICHERUNGEN	BATTERIE	SCHALTER	BATTERIELADUNG KTRL. LAMPE

(2) sostituisce 30000276

(1) sostituisce 58045805

(ACT340) 58057384



(1) (15LD500) ★ F0825500200
(L100AE) 30000277

FERRARI

300 serie 95

AVVIAMENTO ELETTRICO (340-346)

ELECTRIC STARTER
ARRANQUE ELECTRICO

DÉMARRAGE ÉLECTRIQUE
ELEKTROSTART

DALLA MACCHINA
DE LA MAGUINA
DE LA MACHINE
FROM THE MACHINE
AB DER MASCHINE

AGGIORNAMENTO

REVISION

MISE A JOUR

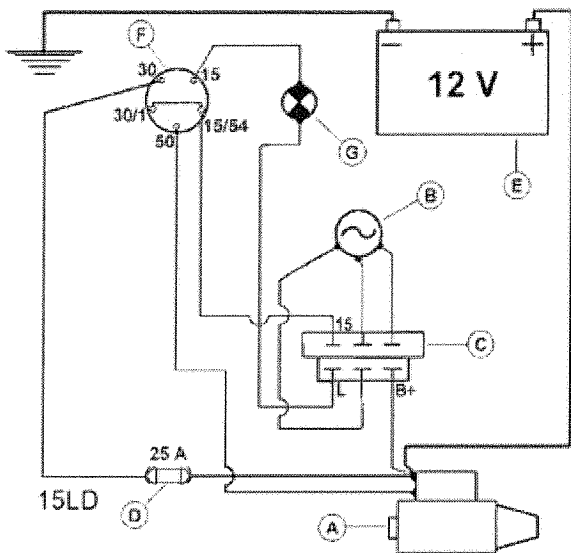
APLAZAMIENTO

ANPASSUNG

02 6

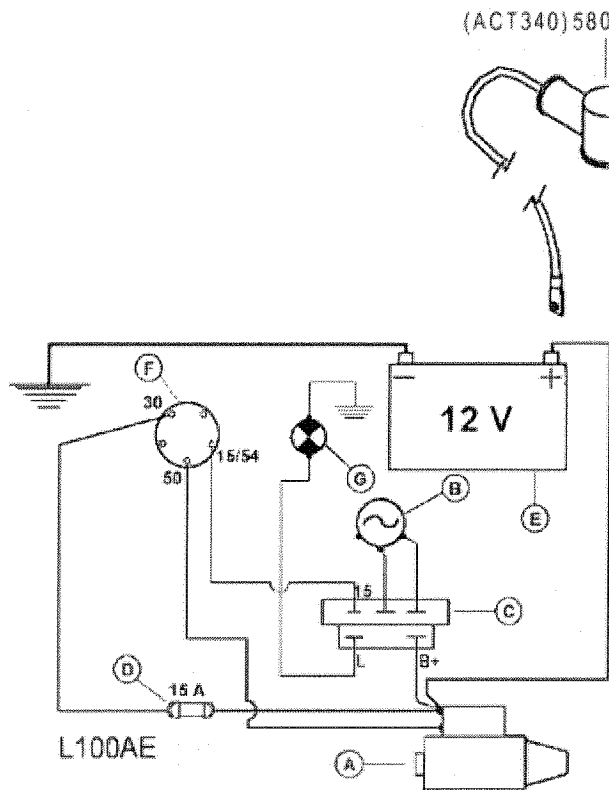
01/2007

★ N.

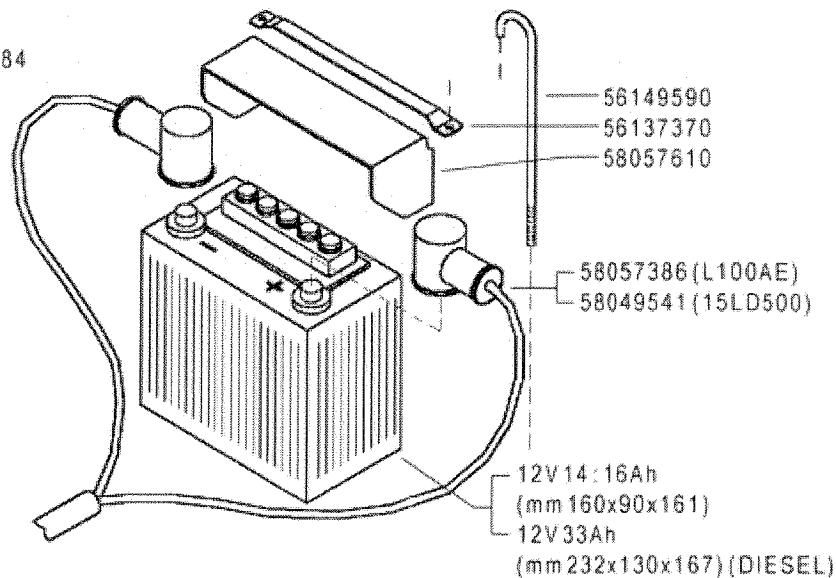


A	B	C
MOTORINO D'AVVIAMENTO STARTER DÉMARREUR MOT. DE ARRANQUE ANLASSMOTOR	GENERATORE GENERATOR GÉNÉRATEUR GENERADOR GENERATOR	REGOLATORE REGULATOR RÉGULATEUR REGULADOR REGLER

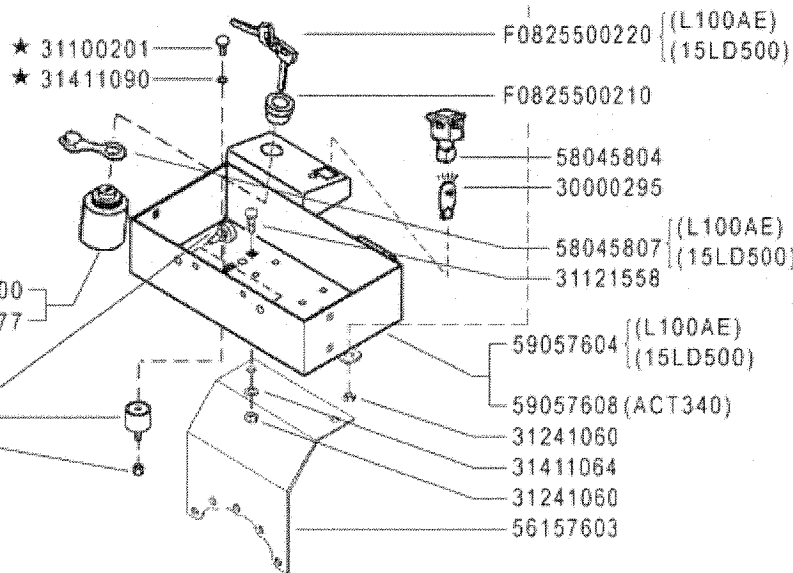
D	E	F	G
FUSIBILI FUSES FUSIBLES FUSIBLES SCHMELZSICHERUNGEN	BATTERIA BATTERY BATTERIE BATERIA BATTERIE	INTERRUTTORE SWITCH INTERRUPTEUR INTERRUPTOR SCHALTER	SPIA CARICA BATTERIA BATTERY LONG WARN. LIGHT TEMOIN CHARG. BATTERIE LUZ CARGA BATERIA BATTERIELADUNG KTRL. LAMPE



(ACT340) 58057384



- ★ 31100201
- ★ 31411090



FERRARI

300 serie 95

AVVIAMENTO ELETTRICO (340-346)

ELECTRIC STARTER
ARRANQUE ELECTRICO

DÉMARRAGE ÉLECTRIQUE
ELEKTROSTART

DALLA MACCHINA
DE LA MAGUINA
DE LA MACHINE
FROM THE MACHINE
AB DER MASCHINE

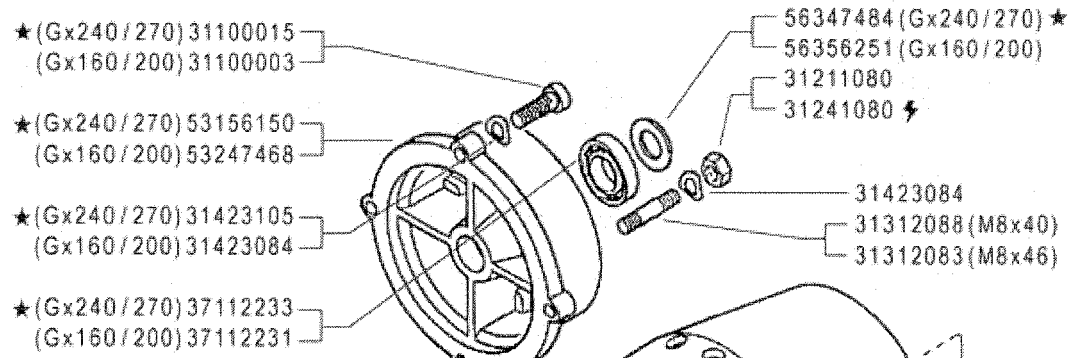
★ N.

(346) 813168
(340) 823957

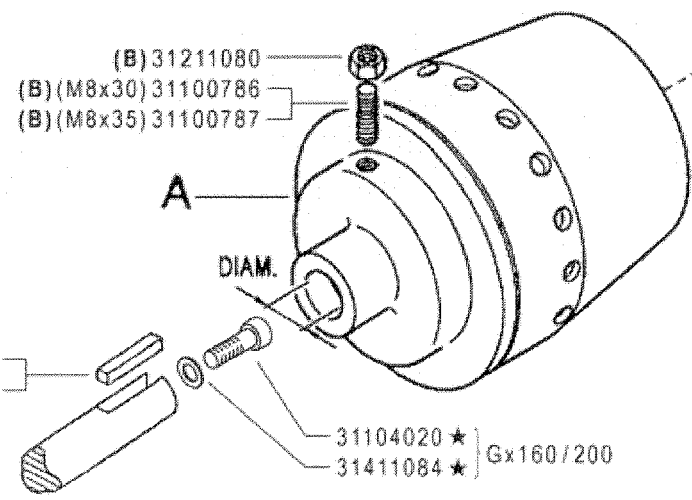
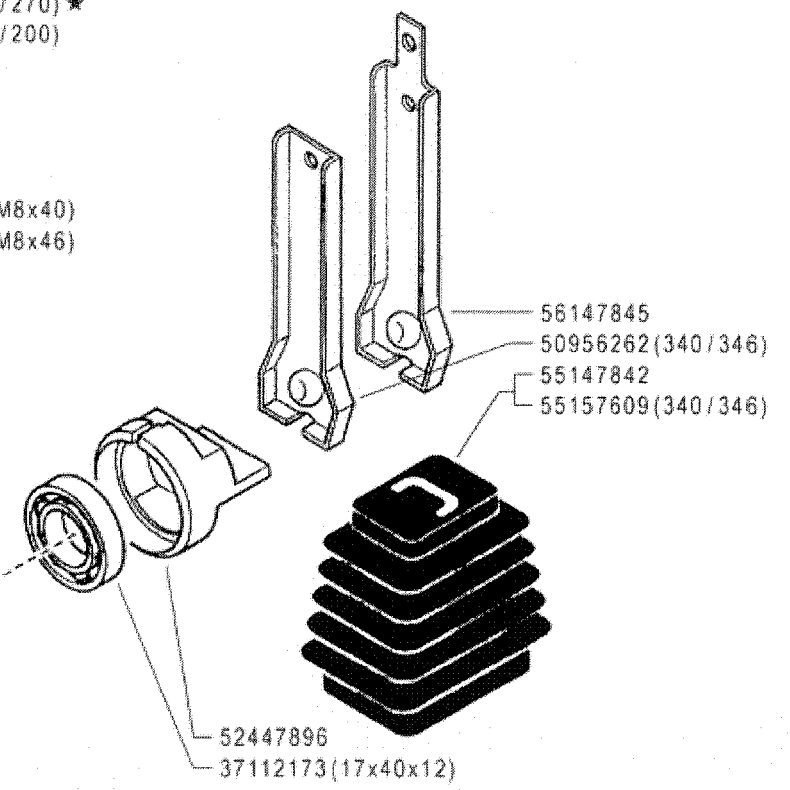
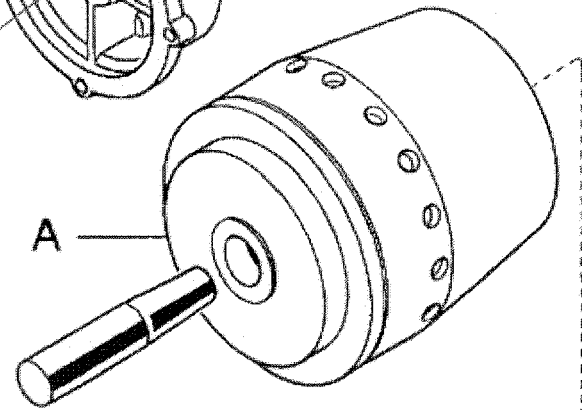
02 7

01/2008

Rev.



MOTORE ENGINE MOTEUR MOTOR	A	FRIZIONE CLUTCH EMBRAYAGE EMBRAGUE KUPPLUNG
Acme A220	59247884	
A349 - A360 - ACT280	59247884	
ACT340	59247971	
Honda Gx160/200	59256271 ★(1)	
Honda Gx240/270 ★	59256253	
Lombardini 15LD315/350	59247884	
Lombardini 15LD500 ★	59247924	
Yanmar L70AE ★	59247884	
Yanmar L100AE	59247971	



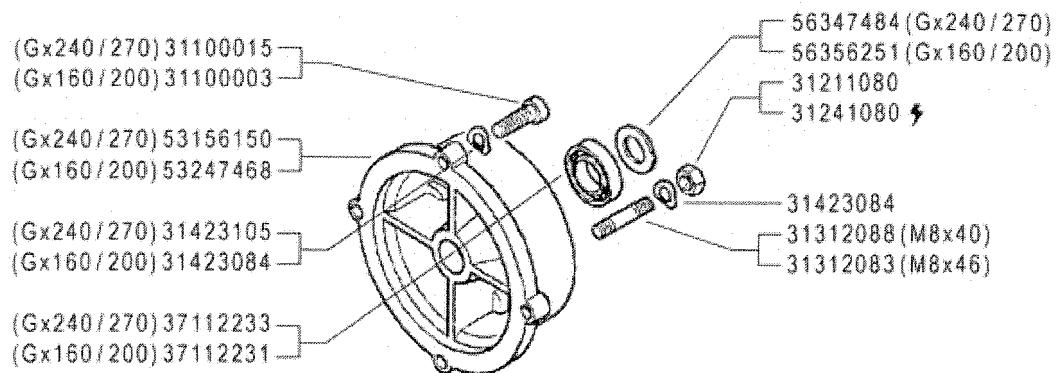
**NON SMONTARE MAI LA FRIZIONE
NEVER DISASSEMBLE THE CLUTCH
NE DEMONTER JAMAIS L'EMBRAYAGE
NIEMALS DIE KUPPLUNG AUSBAUEN
NO DESMONTAR JAMAS EL EMBRAGUE**

(1) sostituisce 59256265

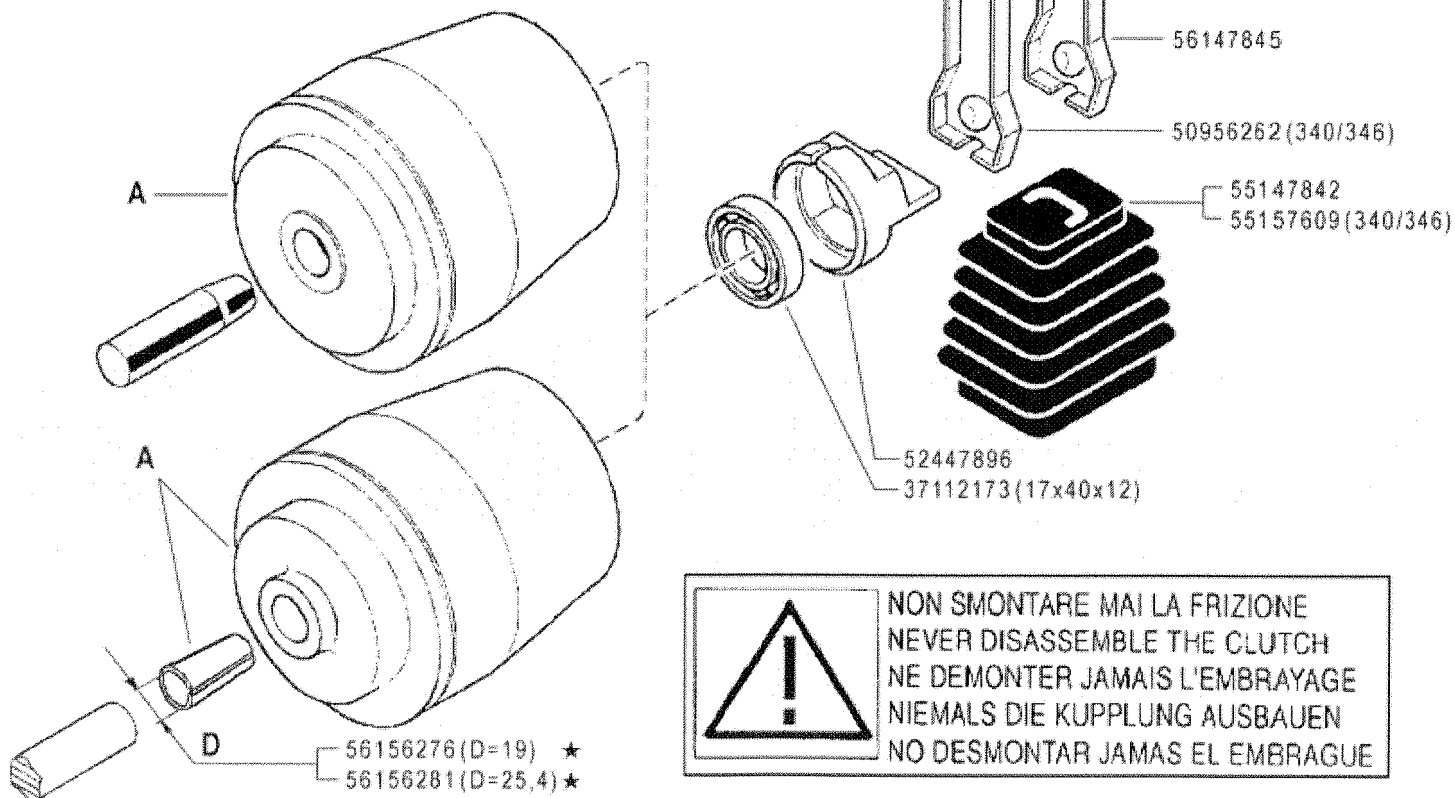
ⓑ serrare a 2 kgm

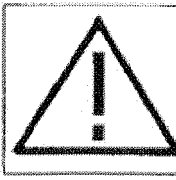
	300 serie 95	FRIZIONE A CONO AUTOVENTILANTE	DALLA MACCHINA DE LA MAQUINA DE LA MACHINE FROM THE MACHINE AB DER MASCHINE	Rev.	
		CLUTCH	EMBRAYAGE	03	
		EMBRAGUE	KUPPLUNG	(1) 763195	3
				752002 (346) 749391 (340)	02/2006

★ N.



MOTORE ENGINE MOTEUR MOTOR	A	FRIZIONE CLUTCH EMBRAYAGE EMBRAGUE KUPPLUNG
Acme A220	59247884	
A349 - A360 - ACT280	59247884	
ACT340	59247971	
Honda Gx160/200 (D=19)	59256275 ★ (1)	
Honda Gx240/270 (D=25,4)	59256279 ★ (2)	
Lombardini 15LD315/350	59247884	
Lombardini 15LD500	59247924	
Yanmar L70AE	59247884	
Yanmar L100AE	59247971	




NON SMONTARE MAI LA FRIZIONE
NEVER DISASSEMBLE THE CLUTCH
NE DEMONTER JAMAIS L'EMBRAYAGE
NIEMALS DIE KUPPLUNG AUSBAUEN
NO DESMONTAR JAMAS EL EMBRAGUE

(2) sostituisce 59256253
 (1) sostituisce 59256271

FERRARI

300 serie 95

FRIZIONE A CONO AUTOVENTILANTE

CLUTCH
EMBRAGUE

EMBRAYAGE
KUPPLUNG

DALLA MACCHINA
DE LA MAQUINA
DE LA MACHINE
FROM THE MACHINE
AB DER MASCHINE

CHIEDERE A S.A.T.
 ASK TO S.A.T.
 DEMANDER A S.A.T.
 SOLICITAR EL S.A.T.
 ANFRAGEN DER S.A.T.

★ N.

03

Rev. 4

11/2006

27/10/06

HONDA Gx 120/160/200 31100003
 HONDA Gx240/270/340/390 31100015
 HONDA Gx240/270/340/390 31423105
 31423084
 HONDA Gx120/160/200 53247488
 HONDA Gx240/270/340/390 53156150

31312088
 31312083

31211080
 31241080 ⚡
 31423084

56147845
 50956262
 52447896

55147842

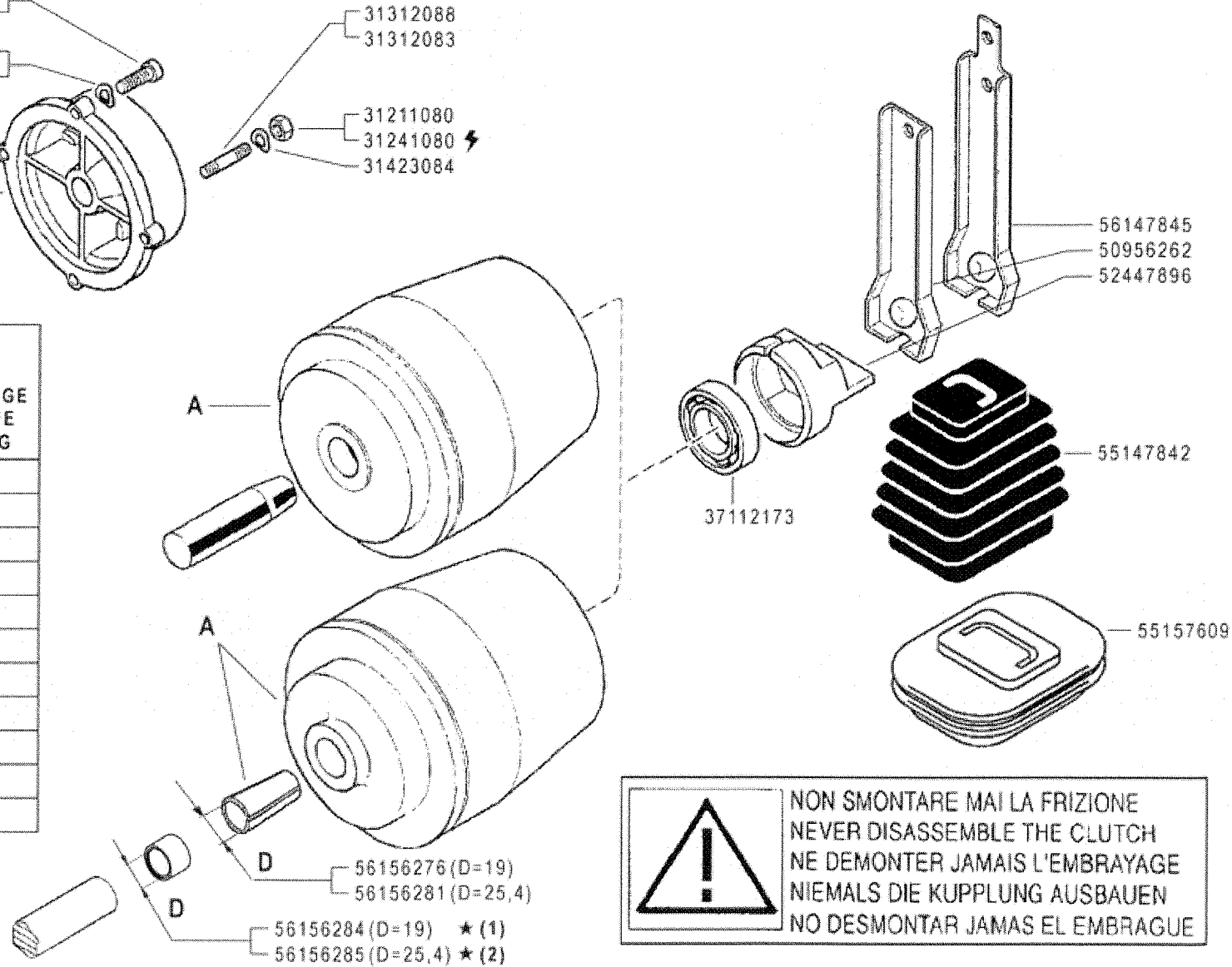
55157609

37112173

56156276 (D=19)
 56156281 (D=25,4)

56156284 (D=19) ★ (1)
 56156285 (D=25,4) ★ (2)

MOTORE ENGINE MOTEUR MOTOR	FRIZIONE CLUTCH A EMBRAYAGE EMBRAGUE KUPPLUNG
Acme A220	59247884
Acme A220 (REF.)	59256255
Acme ACT 280 - A349 - A360	59247884
Acme ACT 340	59247971
Honda Gx 390 - Gx 340 D=25,4	59256280
Honda Gx 240/270 D=25,4	59256279
Honda Gx 120/160/200 D=19	59256275
Lombardini 15LD315/350	59247884
Lombardini 15LD500	59247924
Yanmar L100AE	59247971
Yanmar L70AE	59247884

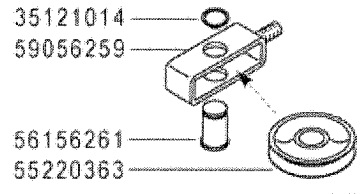


!
 NON SMONTARE MAI LA FRIZIONE
 NEVER DISASSEMBLE THE CLUTCH
 NE DEMONTER JAMAIS L'EMBRAYAGE
 NIEMALS DIE KUPPLUNG AUSBAUEN
 NO DESMONTAR JAMAS EL EMBRAGUE

FERRARI
 300 serie 95

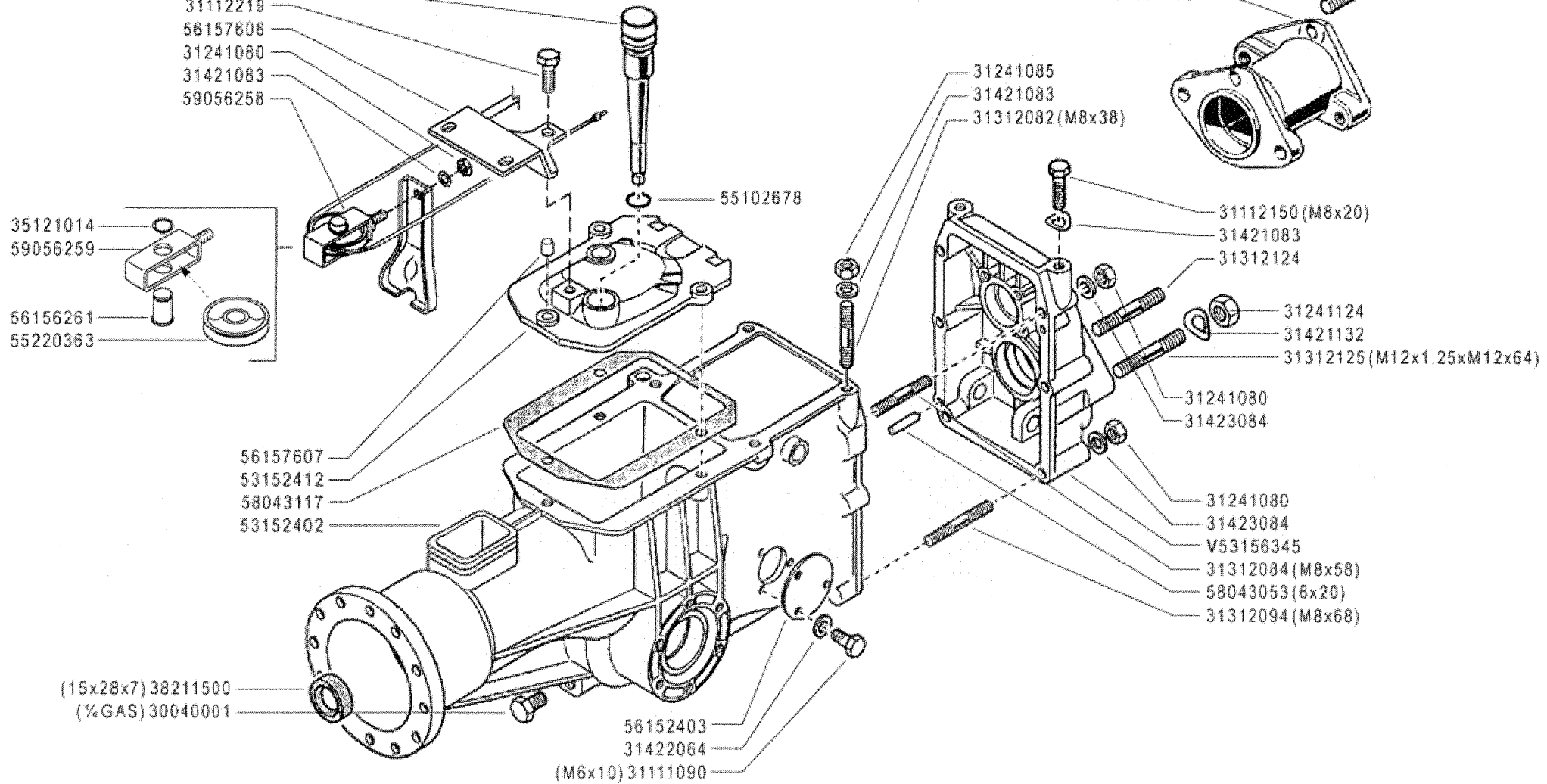
FRIZIONE A CONO AUTOVENTILANTE
 CLUTCH
 EMBRAYAGE
 KUPPLUNG

DALLA MACCHINA
 DE LA MAQUINA
 DE LA MACHINE
 FROM THE MACHINE
 AB DER MASCHINE
 ★ N.
 (2) 799519
 (1) 779324
 03 5
 11/2006



- 59015425
- 31112219
- 56157606
- 31241080
- 31421083
- 59056258

- 31221121
- 31421132
- 31312124
- 51352263



(15x28x7) 38211500
 (1/2 GAS) 30040001

- 56157607
- 53152412
- 58043117
- 53152402

- 56152403
- 31422064
- (M6x10) 31111090

- 31241085
- 31421083
- 31312082 (M8x38)

- 31112150 (M8x20)
- 31421083
- 31312124

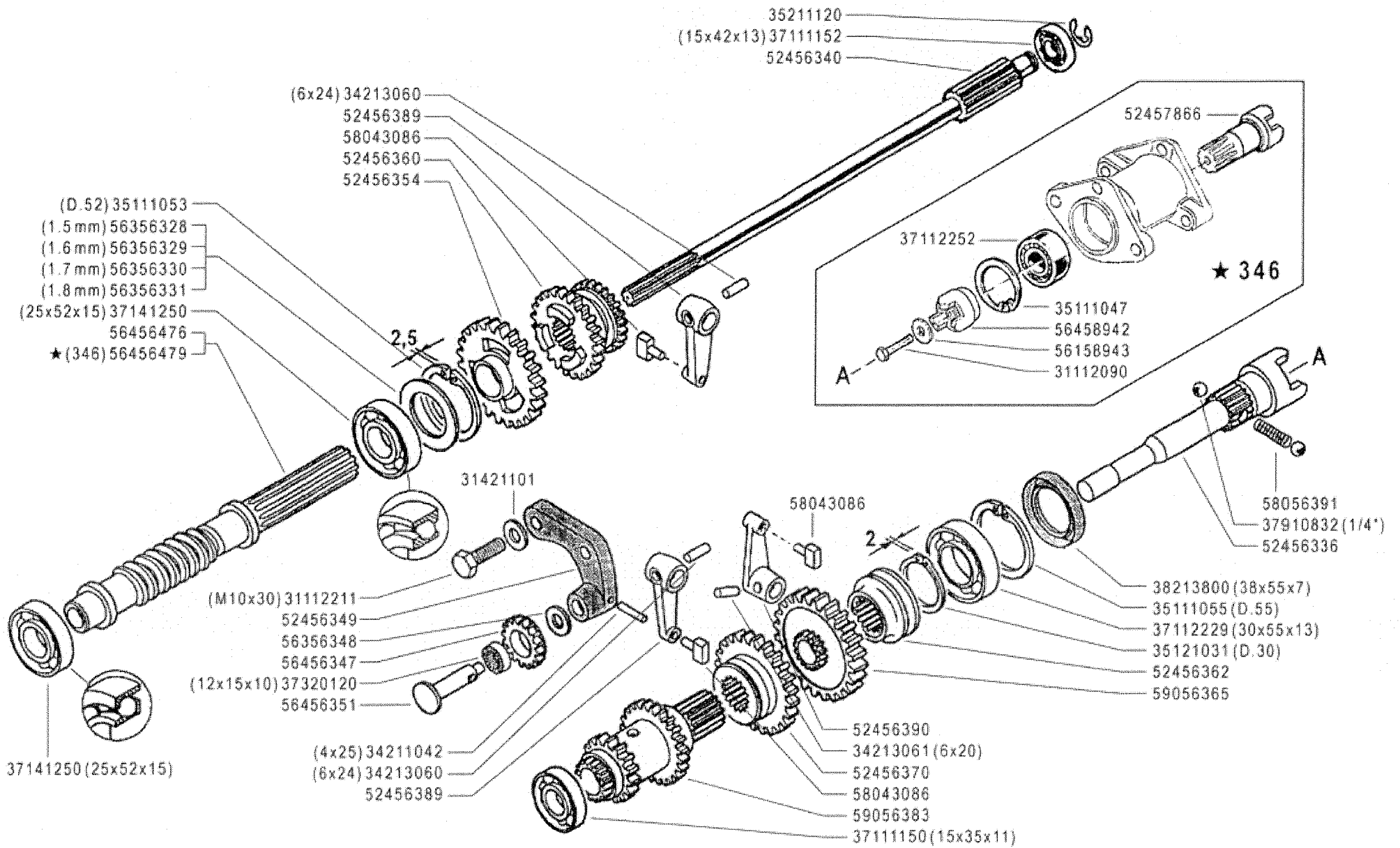
- 31241124
- 31421132
- 31312125 (M12x1.25xM12x64)

- 31241080
- 31423084

- 31241080
- 31423084
- V53156345
- 31312084 (M8x58)
- 58043053 (6x20)
- 31312094 (M8x68)

V = verde - green - vert - grün

FERRARI	300 serie 95	SCATOLA CAMBIO (346)			04 A 0	Rev.
		GEARBOX	BOÎTE DE VITESSES	FROM THE MACHINE		
		CAJA DE CAMBIO	WECHSELGETRIEBE	AB DER MASCHINE	N.	752002
						02/2006



FERRARI

300 serie 95

INGRANAGGI CAMBIO (340- ★ 346)

GEARS

ENGRANAJES

ENGRANAGES

ZÄHRÄDER

DALLA MACCHINA
DE LA MAQUINA
DE LA MACHINE
FROM THE MACHINE
AB DER MASCHINE

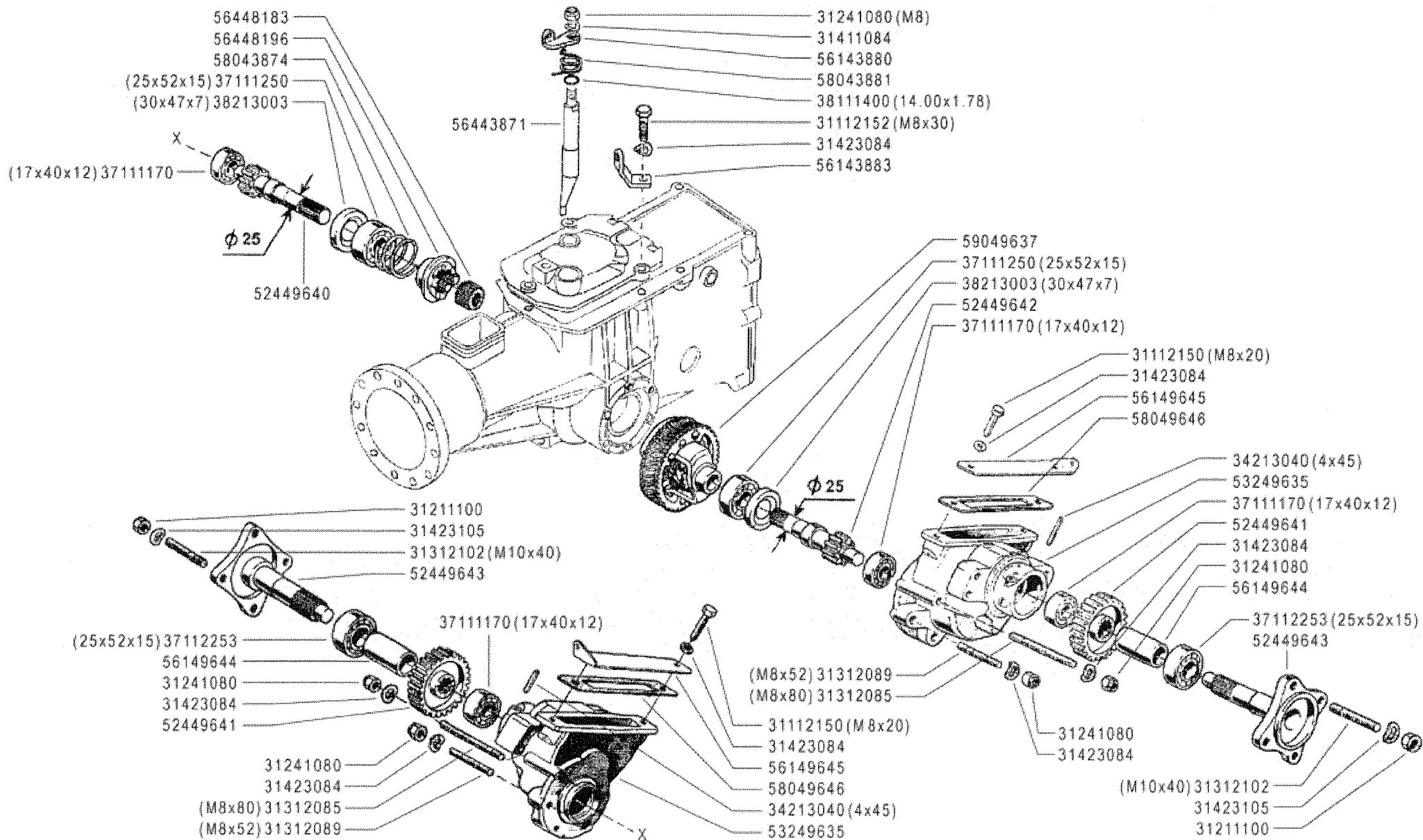
★ N.

752002 (346)

06 3

02/2006

Rev.



FERRARI

300 serie 95

DIFFERENZIALE (346)

DIFFERENTIAL
DIFFERENCIAL

DIFFÉRENTIEL
DIFFERENTIAL

DALLA MACCHINA
DE LA MAQUINA
DE LA MACHINE
FROM THE MACHINE
AB DER MASCHINE

N.

752002

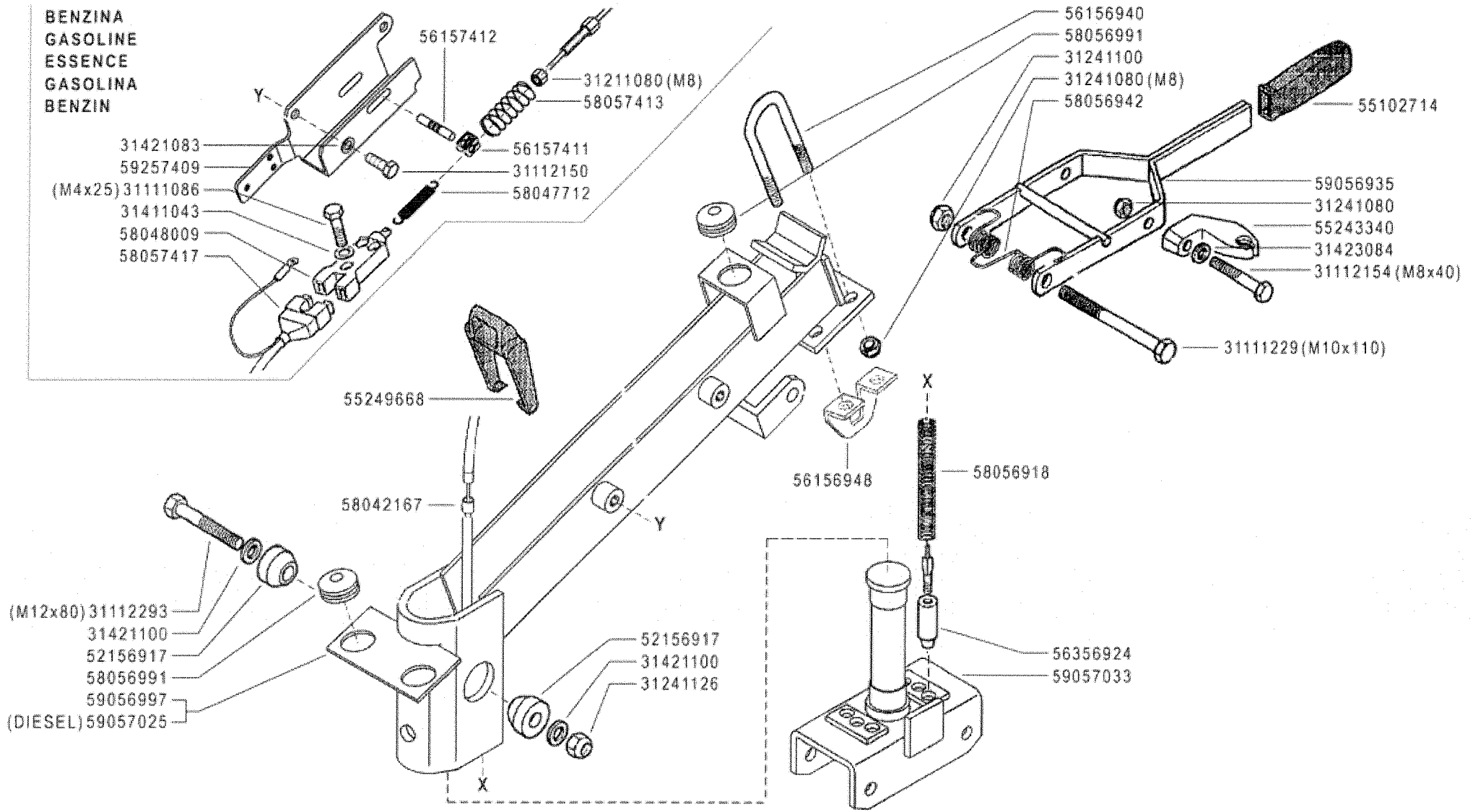
09 A 0

02/2006

Rev.

REV.

BENZINA
GASOLINE
ESSENCE
GASOLINA
BENZIN



FERRARI

300 serie 95

PIANTONE (340-346) ★

STEERING COLUMN
COLUMNNA

PLANTON
LENKSÄULE

DALLA MACCHINA
DE LA MAQUINA
DE LA MACHINE
FROM THE MACHINE
AB DER MASCHINE

★ N.

752002 (346)
749391 (340)

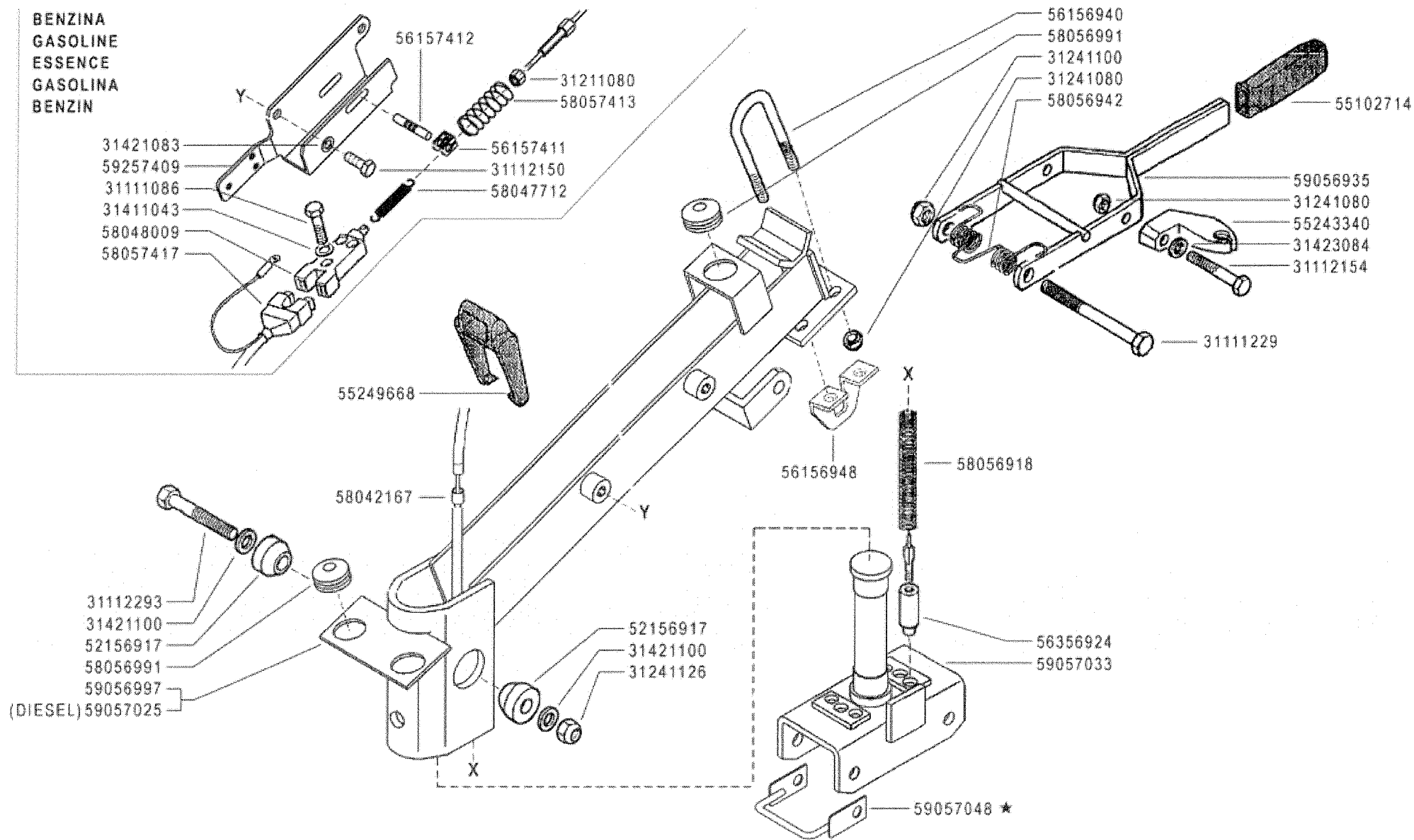
11 4

02/2006

Rev.

ITALIA

BENZINA
GASOLINE
ESSENCE
GASOLINA
BENZIN



FERRARI

300 serie 95

PIANTONE (340-346)

STEERING COLUMN
COLUMNA

PLANTON
LENKSÄULE

DALLA MACCHINA
DE LA MAGLINA
DE LA MACHINE
FROM THE MACHINE
AB DER MASCHINE

AGGIORNAMENTO

REVISION

MISE A JOUR

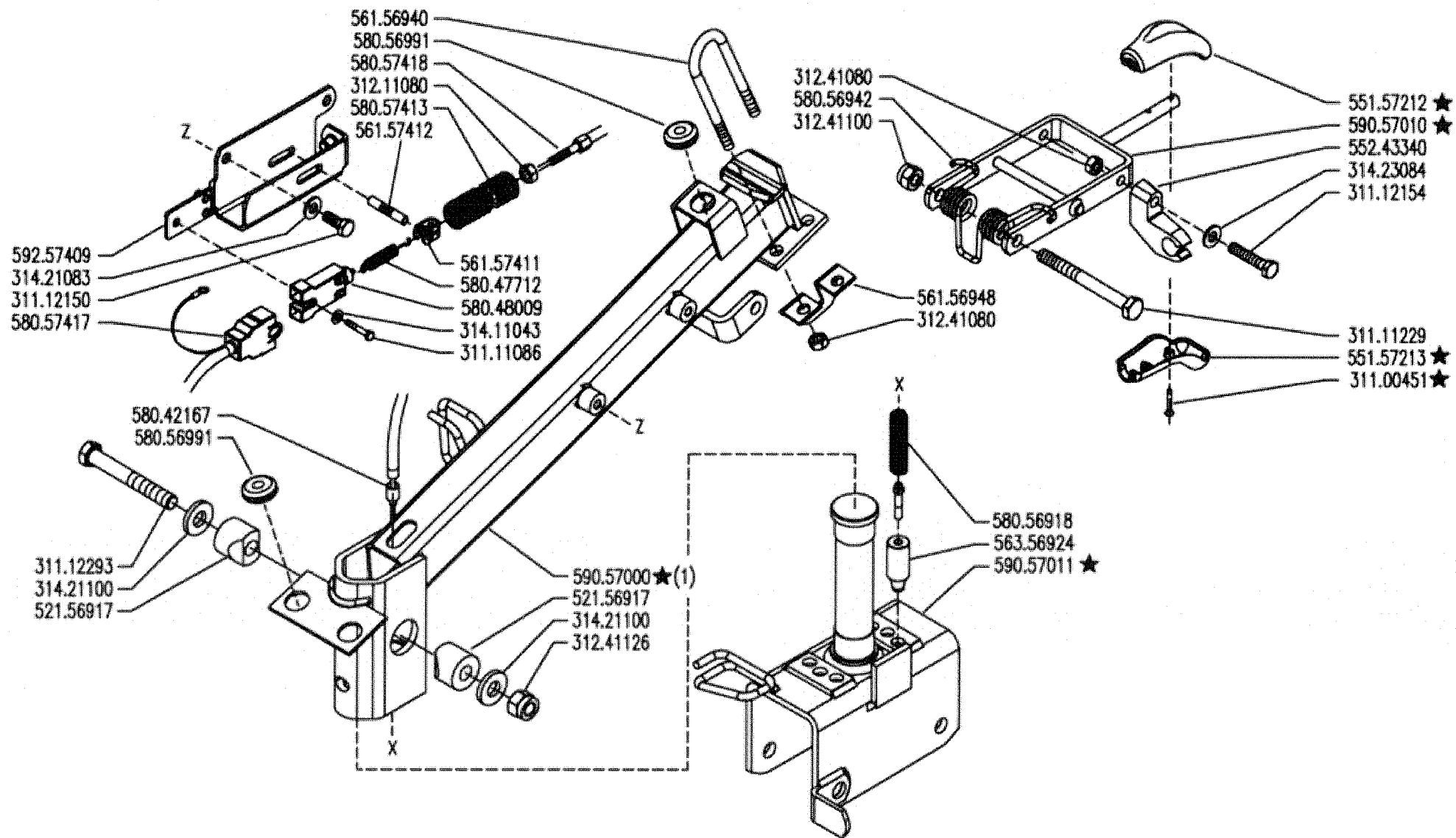
APLAZAMIENTO

ANPASSUNG

11 5

06/2006

★ N.



(1) sostituisce 590.56997 e 590.57025

FERRARI

300 serie 95

PIANTONE (340-346)

STEERING COLUMN
COLUMNNA

PLANTON
LENKSAULE

DALLA MACCHINA
DE LA MACQUINA
DE LA MACHINA
FROM THE MACHINE
AB DER MASCHINE

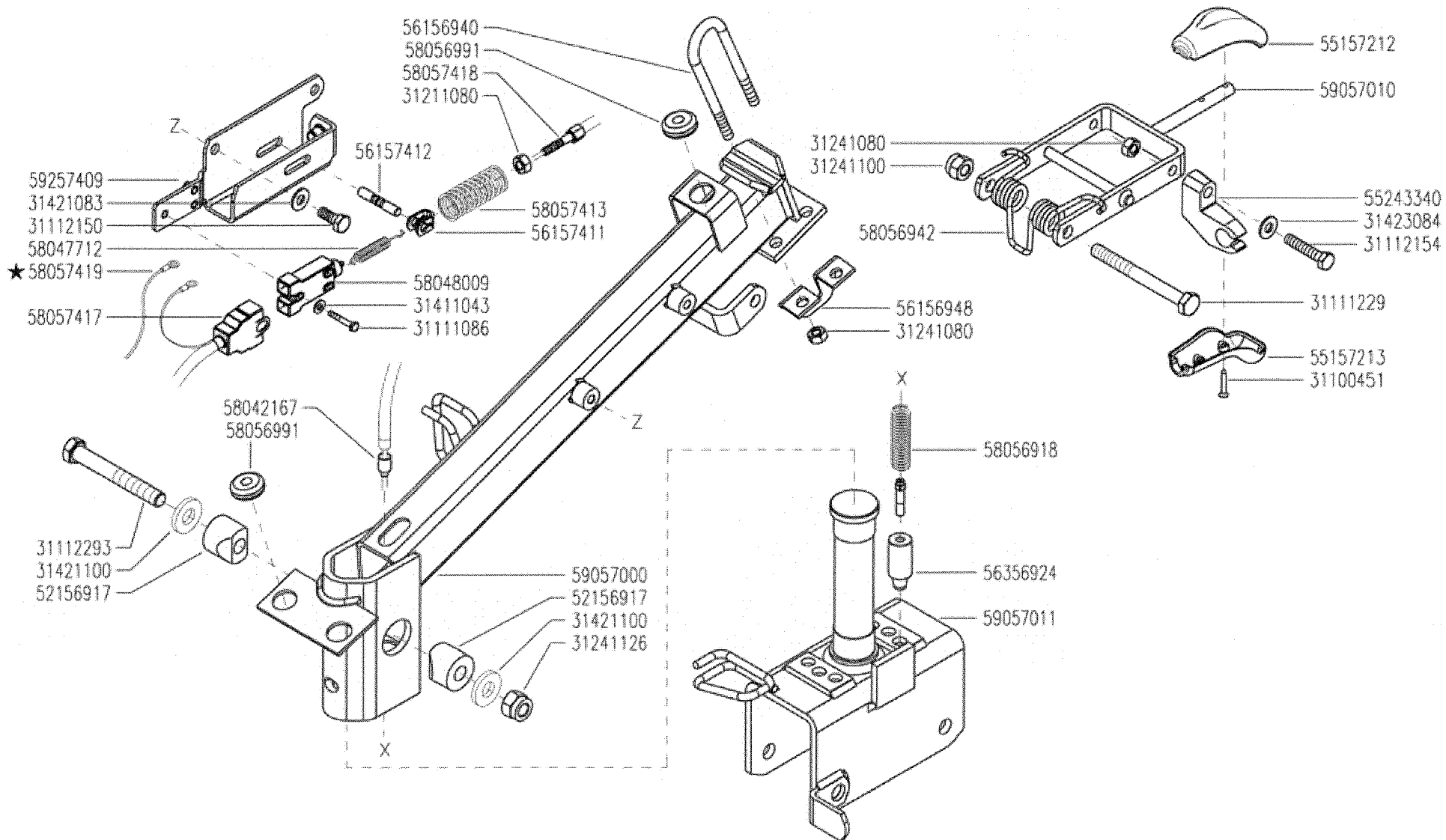
★ N.

783462

11

Rev.
6

01/2007



FERRARI

300 serie 95

PIANTONE (340 - 346)

STEERING COLUMN
COLUMNNA

PLANTON
LENKSÄULE

DALLA MACCHINA
DE LA MAQUINA
DE LA MACHINE
FROM THE MACHINE
AB DER MASCHINE

★ N.

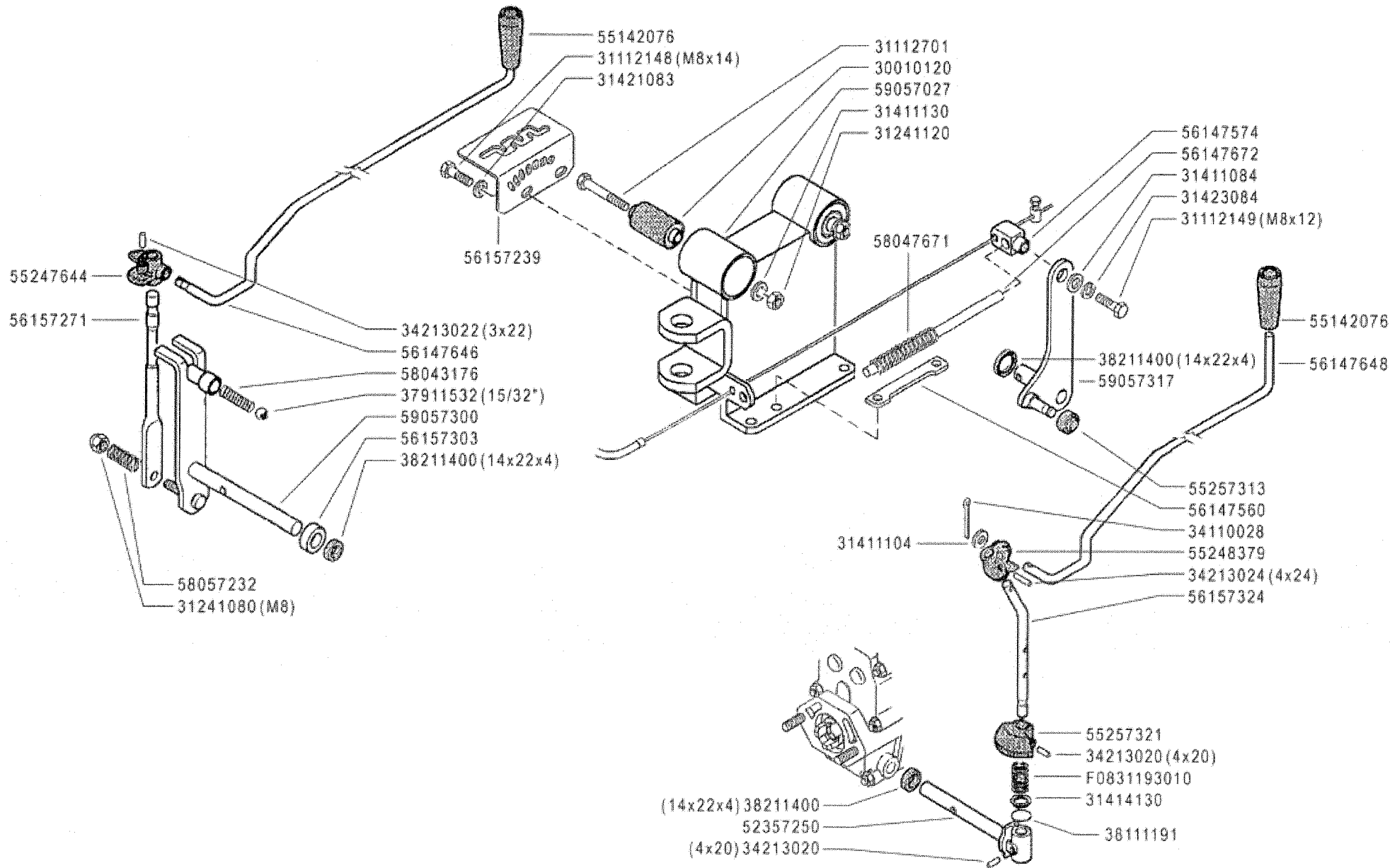
794196

11 7

06/2007

Rev.

03/2007



FERRARI

300 serie 95

COMANDI (340-346) ★

CONTROLS
MANDOS

COMMANDES
ANTRIEBE

DALLA MACCHINA
DE LA MAGUINA
DE LA MACHINE
FROM THE MACHINE
AB DER MASCHINE

★ N.

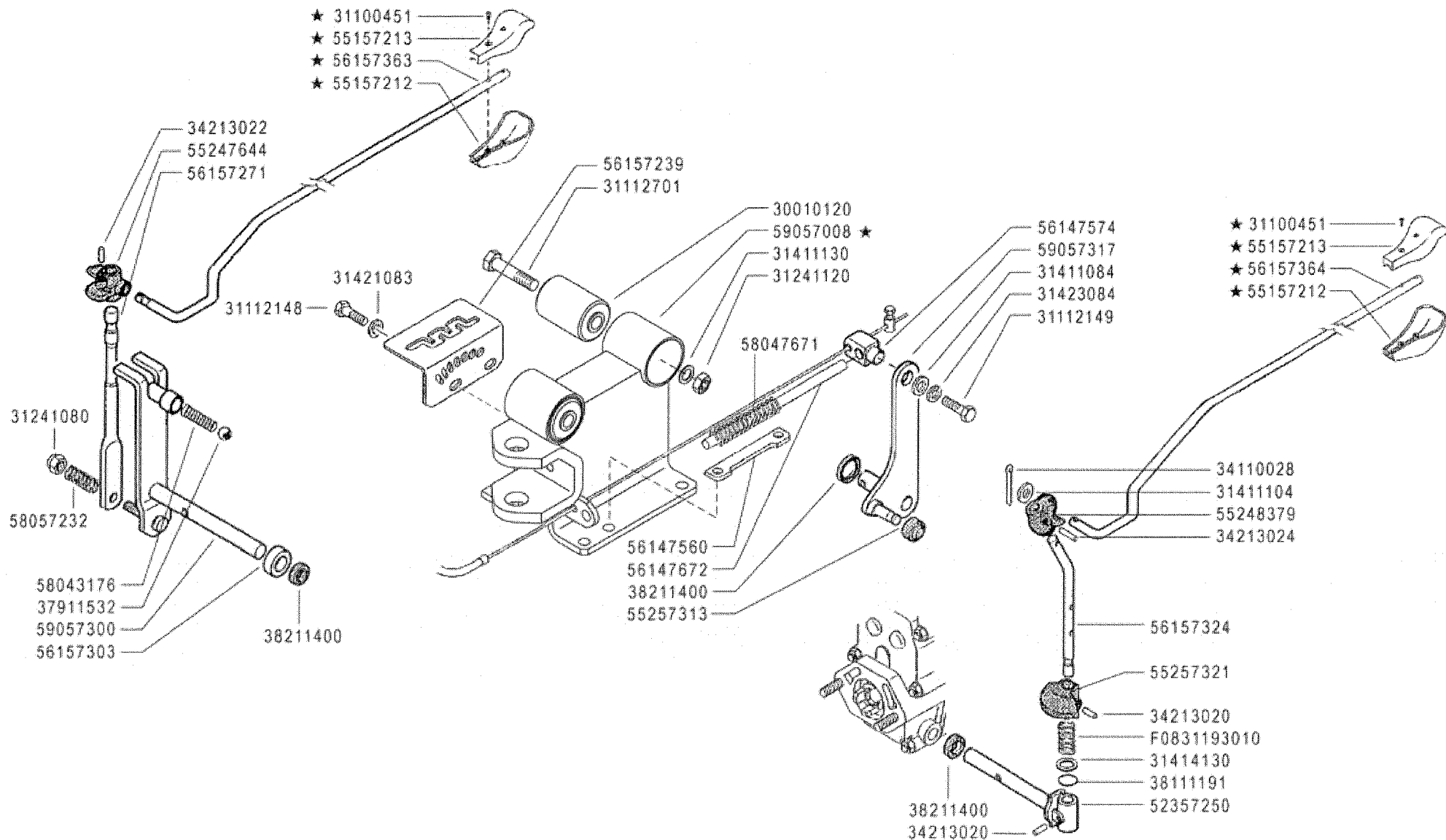
752002 (346)

749391 (340)

11 A 0

02/2006

Rev.



FERRARI

300 serie **95**

COMANDI (340-346)

CONTROLS
MANDOS

COMMANDES
ANTRIEBE

DALLA MACCHINA
DE LA MAQUINA
DE LA MACHINE
FROM THE MACHINE
AB DER MASCHINE

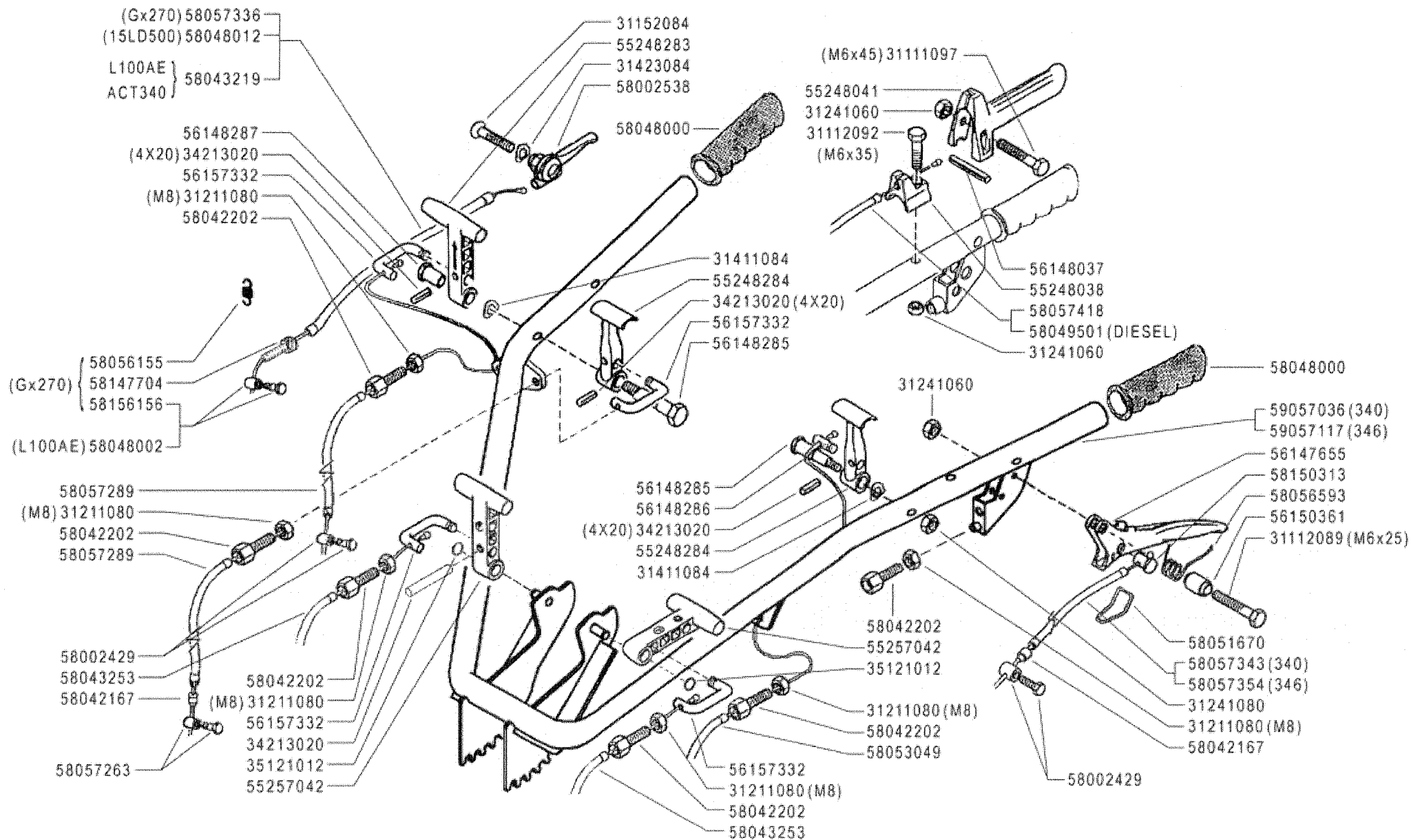
★ N.

783462

11 A 1

01/2007

Rev.



FERRARI

300 serie 95

HANDLEBAR
MANILLAR

MANUBRIO (340-346) ★

MANCHERON
LENKER

DALLA MACCHINA
DE LA MAQUINA
DE LA MACHINE
FROM THE MACHINE
AB DER MASCHINE

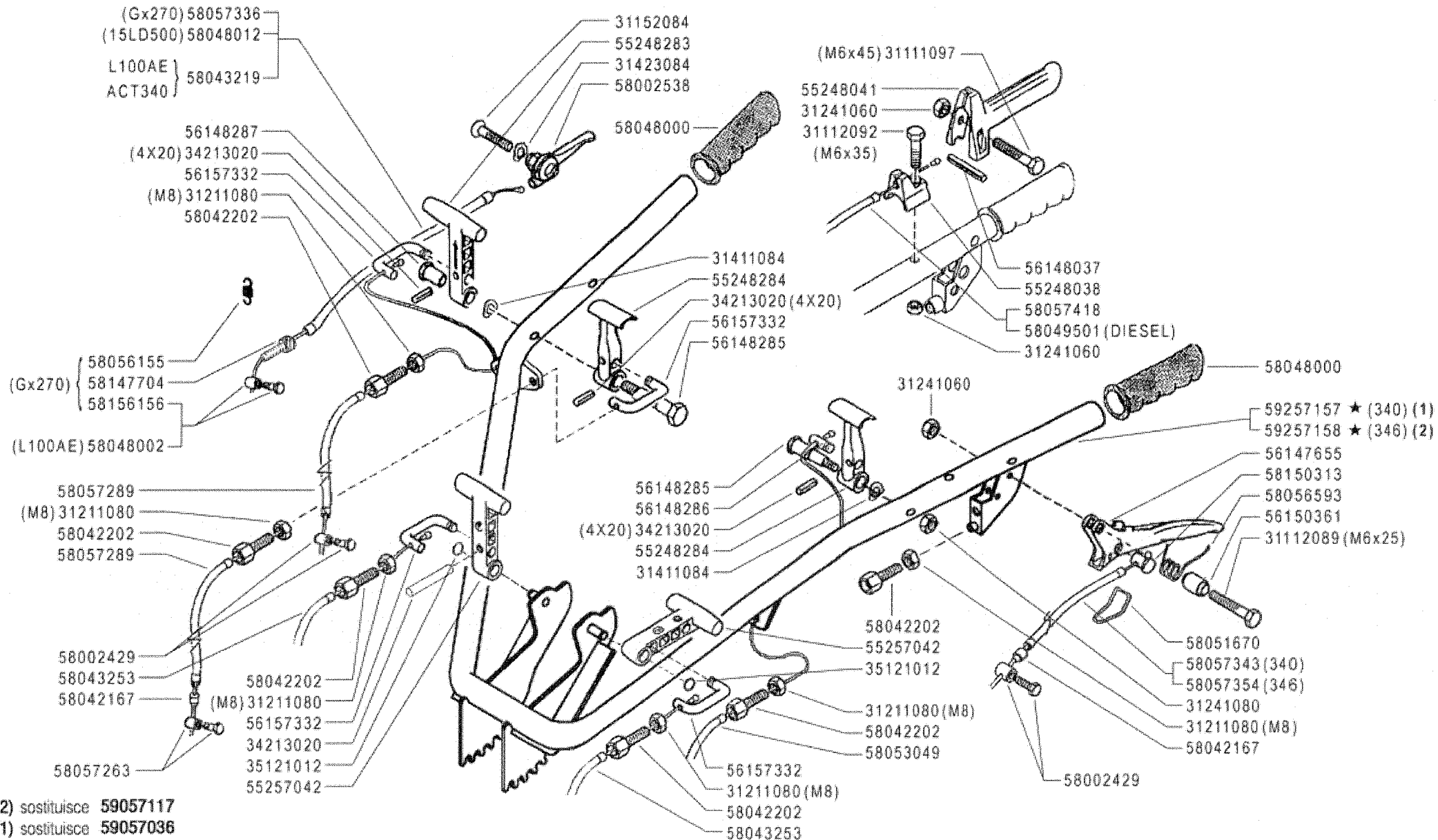
★N.

752002 (346)
749391 (340)

13 4

02/2006

Rev.



FERRARI

300 serie 95

HANDLEBAR
MANILLAR

MANUBRIO (340-346)

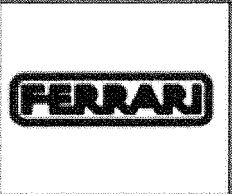
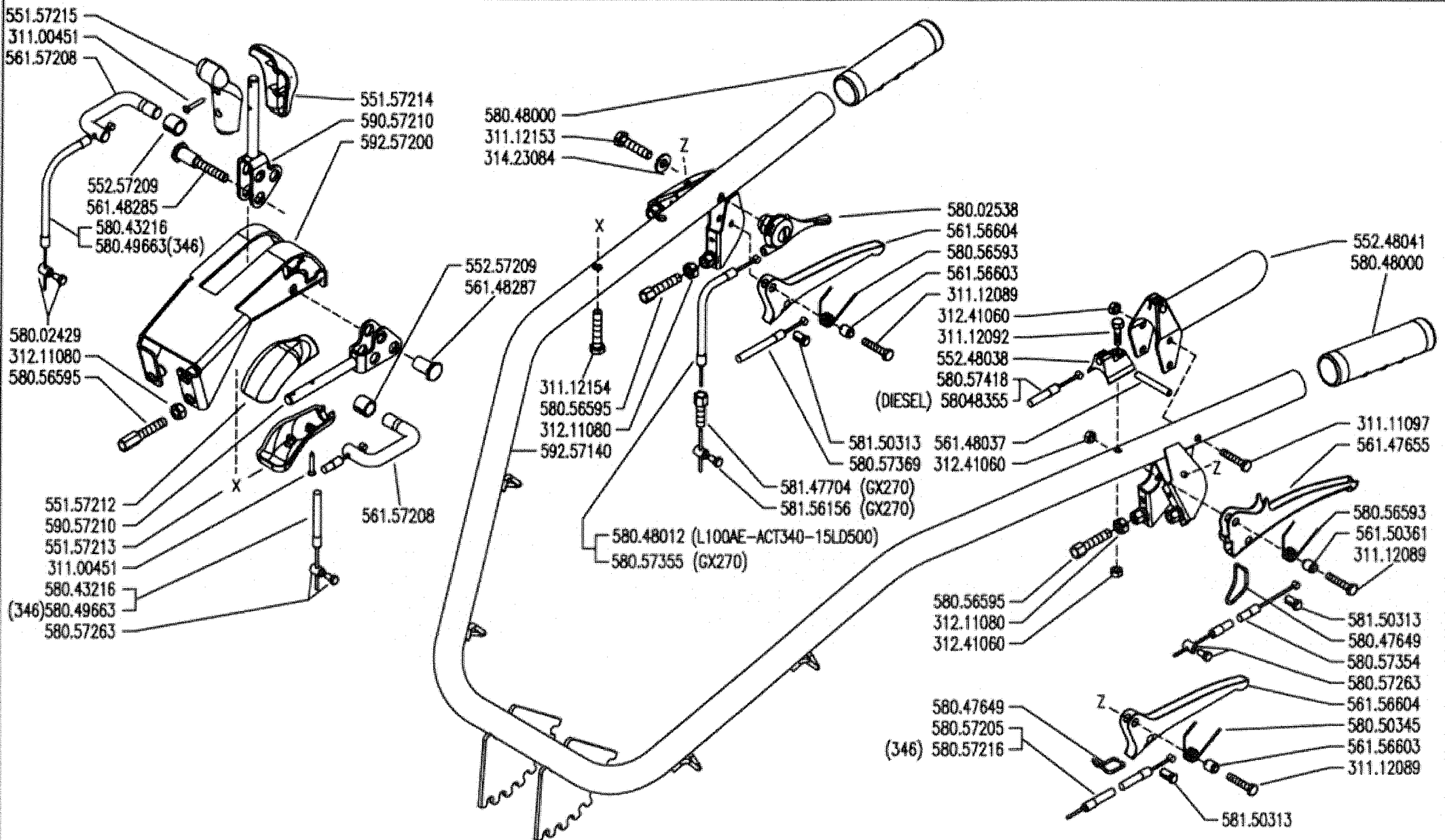
MANCHERON
LENKER

DALLA MACCHINA
DE LA MAQUINA
DE LA MACHINE
FROM THE MACHINE
AB DER MASCHINE

AGGIORNAMENTO
REVISION
MISE A JOUR
APLAZAMIENTO
ANPASSUNG

★ N.

Rev.
13 **5**
06/2006



300 serie 95

MANUBRIO (340-346) ★
HANDLEBAR
MANILLAR

MANCHERON
LENKER

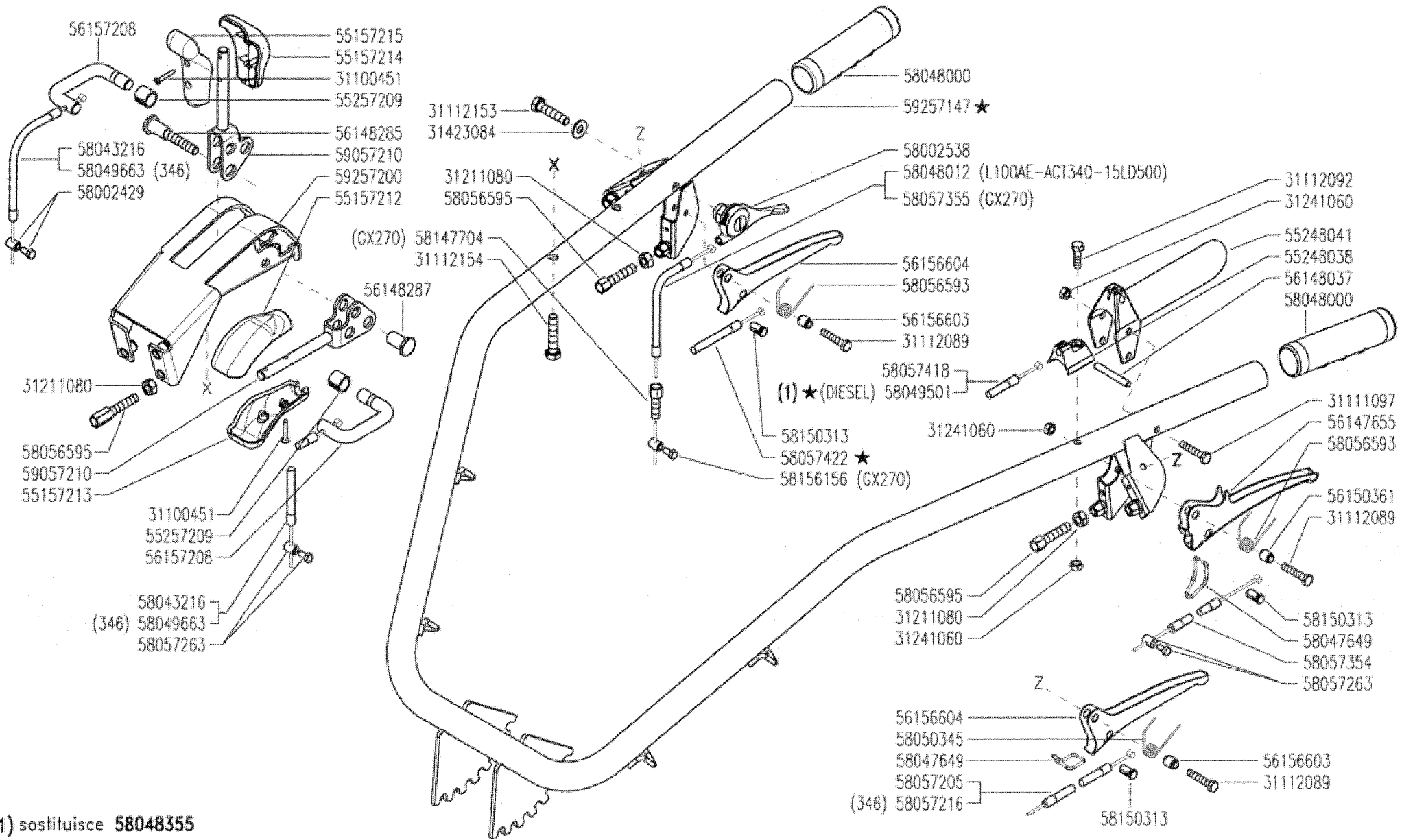
DALLA MACCHINA
DE LA MAQUINA
DE LA MACHINA
FROM THE MACHINE
AB DER MASCHINE

★ N.

783462

13
01/2007

Rev.
6



(1) sostituisce **58048355**

FERRARI

300 serie 95

MANUBRIO (340 - 346)

HANDLEBAR
MANILLAR

MANCHERON
LENKER

DALLA MACCHINA
DE LA MAQUINA
DE LA MACHINE
FROM THE MACHINE
AB DER MASCHINE

★ N.

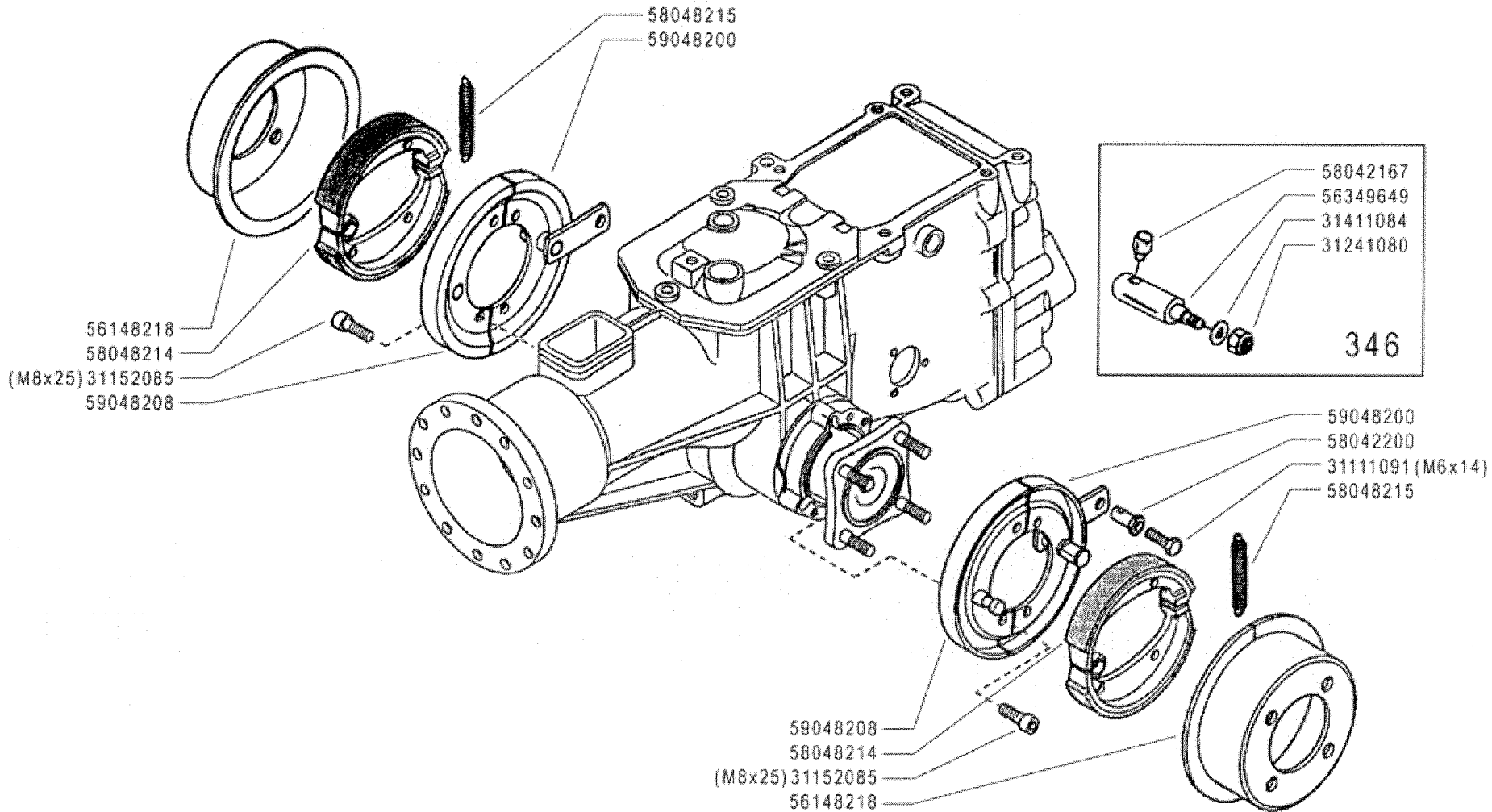
817451

13

Rev.
7

06/2008

11/13



FERRARI

300 serie **95**

FRENI (340-346) ★

BRAKES
FRENOS

FREINS
BREMSSEN

DALLA MACCHINA
DE LA MAQUINA
DE LA MACHINE
FROM THE MACHINE
AB DER MASCHINE

★ N.

752002 (346)

749391 (340)

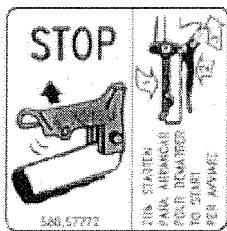
14

Rev.

2

02/2006

RELEASE



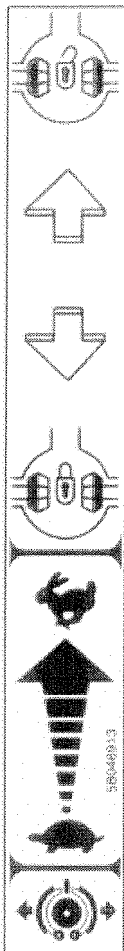
58057772



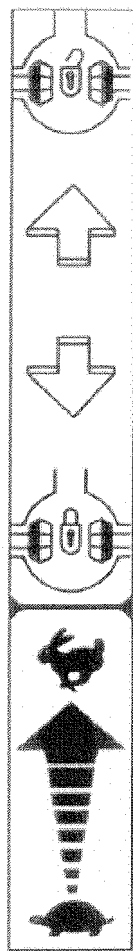
58057770



58046912



58046913



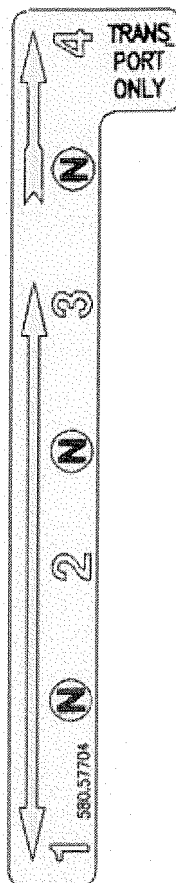
58057688



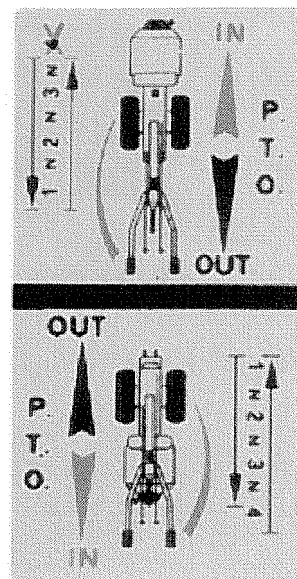
58057677



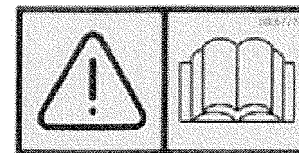
58057678



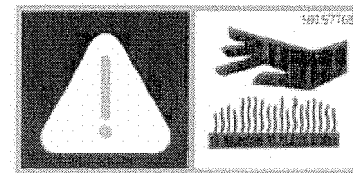
58057704



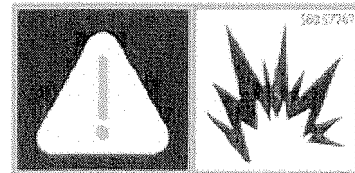
58047729 ★



58057724



58057768



58057767



58057676

FERRARI

300 serie 95

ADESIVI

STICKERS
ADHESIVOS

AUTOCOLLANTS
AUFKLEBES

DALLA MACCHINA
DE LA MAQUINA
DE LA MACHINE
FROM THE MACHINE
AB DER MASCHINE

AGGIORNAMENTO
REVISION
MISE A JOUR
APLAZAMIENTO
ANPASSUNG

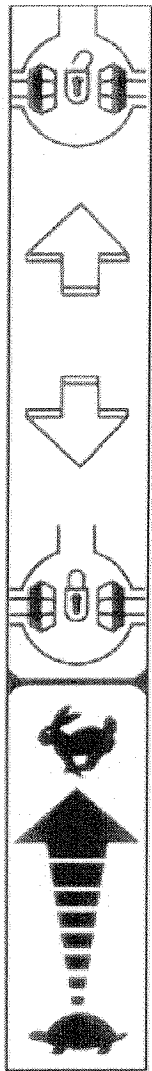
★N.

16

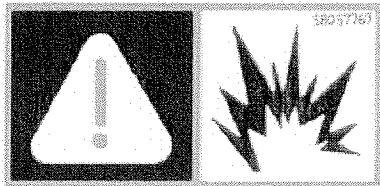
2

02/2006

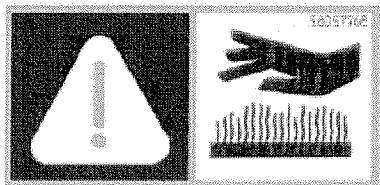
ZENE



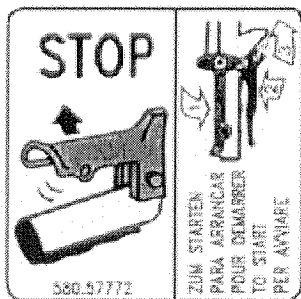
58057688



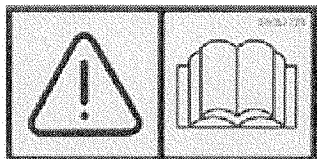
58057767



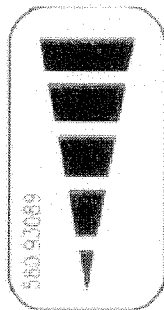
58057768



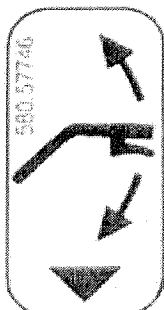
58057772



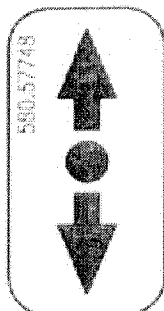
58057724



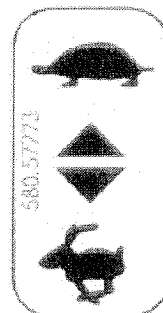
58093089



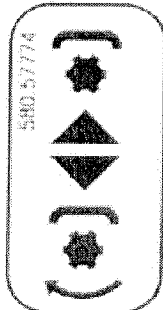
58057746



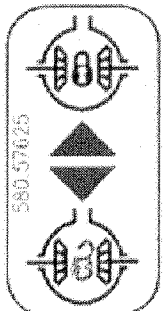
58057748



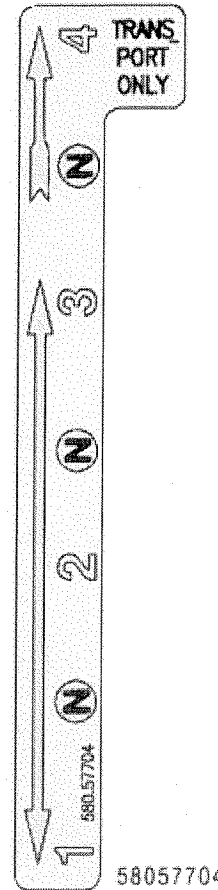
58057773



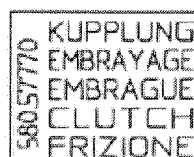
58057774



58057625



58057704



58057770



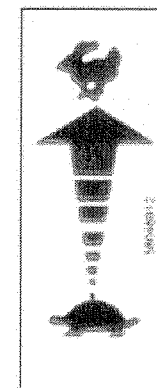
58057677



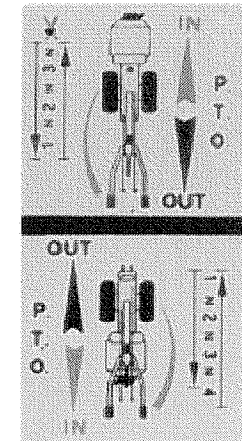
58057678



58057676



58046912



58047729

FERRARI

300 serie 95

ADESIVI

STICKERS
ADHESIVOS

AUTOCOLLANTS
AUFKLEBES

DALLA MACCHINA
DE LA MAQUINA
DE LA MACHINE
FROM THE MACHINE
AB DER MASCHINE

AGGIORNAMENTO

REVISION

MISE A JOUR

APLAZAMIENTO

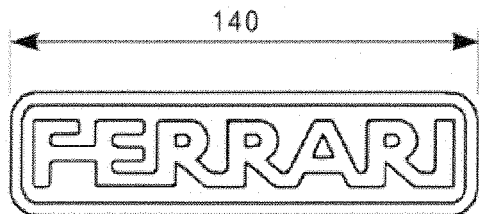
ANPASSUNG

16

Rev.
3

07/2006

★ N.



58052029



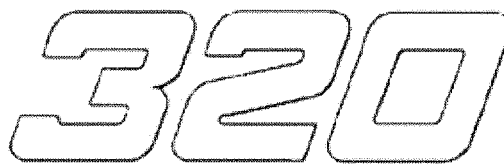
58052035



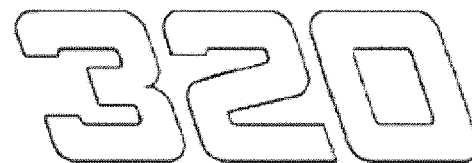
58052036



58052019



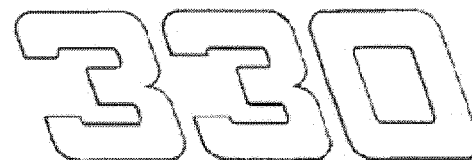
58052026



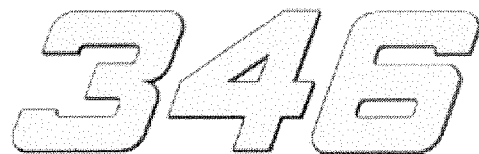
58052025



58052028



58052027



58052152 ★



58052013

FERRARI

300 serie 95

STICKERS
ADHESIVOS

ADESIVI

AUTOCOLLANTS
AUFKLEBES

DALLA MACCHINA
DE LA MAQUINA
DE LA MACHINE
FROM THE MACHINE
AB DER MASCHINE

AGGIORNAMENTO

REVISION

MISE A JOUR

APLAZAMIENTO

ANPASSUNG

Rev.

17 0

02/2006

★ N.